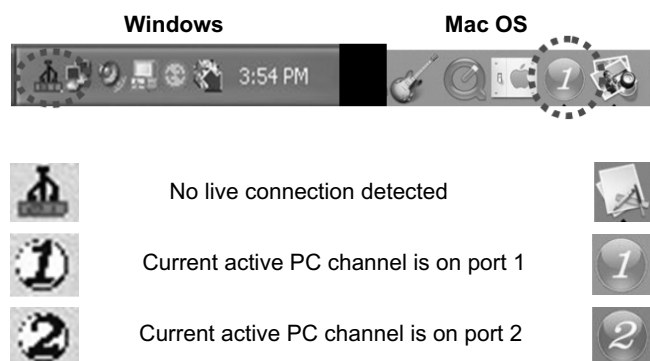


KVM Switcher

The KVM Switcher Utility is the interface to set up Hot Key, auto scan period etc. It can work in Windows and MAC system. Hereunder describes how to install and use it.

1. Insert the companion CD into PC's CD drive, and the Autorun screen will pop up (If the Autorun feature has not been enabled on your computer. Just find the Autorun.exe on the CDROM and double-click it to start).
2. Click the Software Installation for Window/Mac to start installation. (If the Mac version software does not start, please copy the program to the local hard disk on Mac). Follow the instructions to do it.
3. The KVM Switcher icon appears on the system tray of the desktop while the installation finished.
4. Right-click to evoke the operation menu, and double-click to evoke the configuration box.



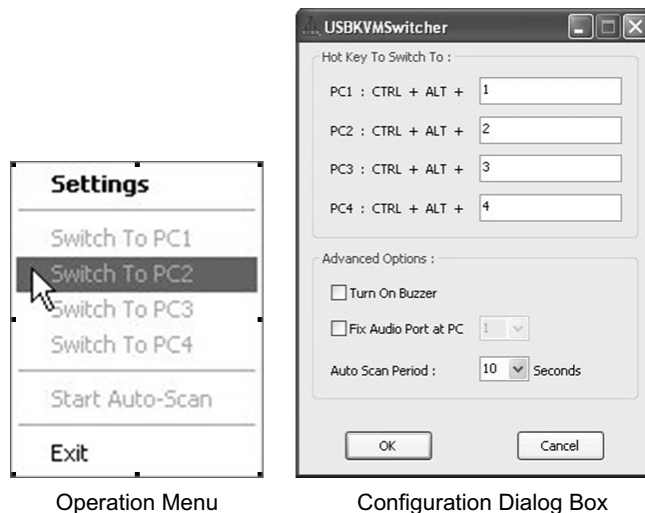
5

Switch to PC x by Operation Menu

1. Right-click the KVM Switcher icon to evoke the operation menu, then select whichever PC that is available for switching.
2. Once you select a PC channel, it will immediately switch to that PC.

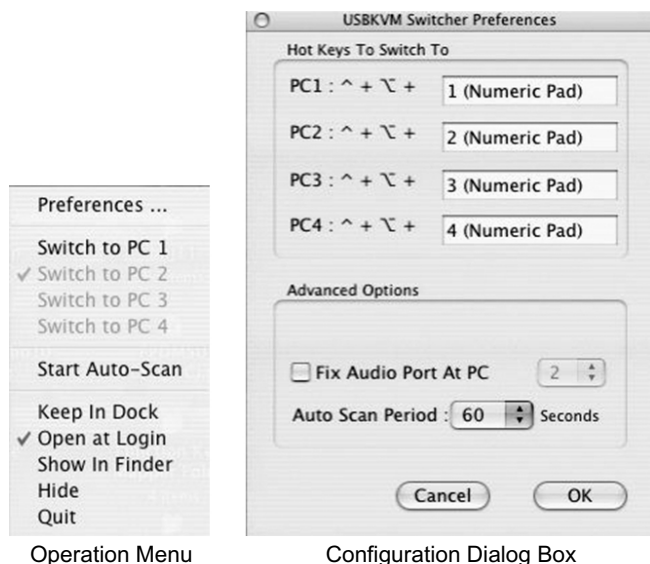
Note: the unconnected port(s) or the active port will be grayed-out and hence non-selectable.

Windows :



6

Mac OS:



Micronet
Making Communication Easier



Switch to PC x by Keyboard Hotkeys

Hit the hotkey according to your current hotkey definition:

Hotkey sequence = Ctrl - Alt - [command key]

User Manual

USB KVM Switch

Model No.: SP212D/SP214D



P/N: 2300-0505

Web: www.micronet.com.tw

Introduction

SP212D/SP214D is a 2/4-port compact size USB KVM switch to control and access 2/4 hosts through only one set of keyboard, video and mouse. In addition, with audio and microphone switching function, SP214D can control the audio sets on the 4 computers using one speaker and microphone.

Features

- 2/4-port Slim Palmtop KVM Switch with 2/4 x detachable USB KVM cables
- USB console support USB keyboard and mouse
- Audio and Microphone independent/simultaneous switching for uninterrupted multimedia experience across multi-platforms (SP214D Only)
- Multi-platform support for PCs and Macintosh G3/G4 MAC, iMAC
- Window-based Switching Software for easy switching
- Additional universal port switching hotkey for PC platform.
- High VGA resolution 2048 x 1536

1

Easy Operation

The device can be controlled by (1) the face-panel push buttons, (2) the hotkey sequences, or (3) the KVM Switcher Software.

(1) Face-panel buttons

1. The face-panel button allows a direct control over KVM switching operation. Simply press the button to switch to the corresponding PC port (and audio/mic channel, if binding is enabled).
2. By default, computer port switching and audio/mic port switching are bound together, unless you specify the audio to be fixed a specific port.

(2) Keyboard hotkeys

1. User-definable hotkeys for PC selection:
 - 1.1. Hotkey sequence = **Ctrl - Alt - [command key]**
 - 1.2. The factory default hotkey setting is **Ctrl + Alt + 1/2/3/4** for PC 1/2/3/4. You can also use **ScrLk + ScrLk** to switch PC.
 - 1.3. The face-panel button allows switching to an empty port, however, keyboard hotkeys and the KVM Switcher software don't.

3

Package Contents

SP212D

- 2-port KVM Switch
- User manual
- 2 * KVM cable
- Utility CD

SP214D

- 4-port KVM Switch
- User manual
- 4 * KVM cable
- 4 * Audio cable
- Utility CD

Hardware Installation

1. Make sure that all computers are connected to the KVM Switch and their peripherals are in power-off state.
2. Connect the shared USB keyboard, mouse and monitor to the KVM switch.
3. Connect the shared speaker set and microphone to the KVM switch (SP214D only).
4. Connect each of your computers to the KVM switch, using appropriate KVM and/or Audio/Mic cables.
5. The KVM Switch should be automatically power-on with computers connected.
6. Power up the connected computers one by one then the keyboard and mouse will be recognized. Now, the KVM switch can work normally.

2

2. Universal hotkey for switching to next port:

- 2.1. Universal Hotkey sequence = **ScrLk + ScrLk**
- 2.2. For other operating systems on PC such as Linux, you can still use this special hotkey to facilitate PC switching. This special hotkey is not available for Mac.

(3) KVM Switcher Software (For Windows only)

In addition to PC switching, the KVM Switcher Software provides more advanced functions and described hereunder.



4