

16-Port 10/100M PoE Switch, 120 Watts

Model No. SP6016PH



Introduction

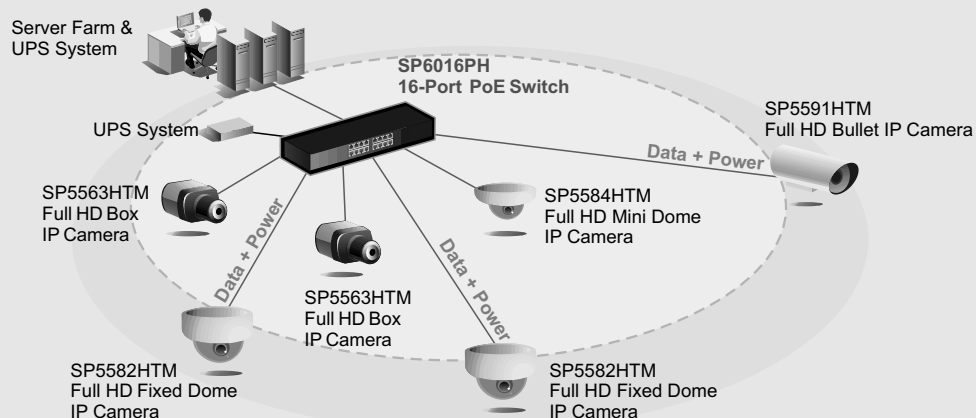
Micronet SP6016PH features a 16-ports 10/100Mbps Fast Ethernet Switch with IEEE 802.3af Power over Ethernet interfaces. It supports MDI / MDI-X function on all 10/100Mbps ports and provides Power injection on each LAN port which complies to IEEE 802.3af (15.4W) PoE powered devices. With 16 dip switches, each PoE port can be manually set for On-off control. SP6016PH is supporting up to 15.4W on each LAN port if its port DIP switch is ON. This offers a more flexible and economic PoE option and greatly simplified the tasks of upgrading network equipments. It provides a simple, cost-effective, and reliable network connection for data and power over Ethernet.

Key Features

- 16-Port 10/100Mbps Fast Ethernet Switch with 16-port Power over Ethernet (PoE) function
- Complies with IEEE 802.3af PoE standards.
- Auto-MDI / MDI-X detection on each RJ-45 port
- Support 10/100Mbps N-way auto-negotiation
- 2K MAC address table, automatic source address learning and aging
- Support power protections as OVP (Over Voltage Protection), OCP (Over Current Protection), OTP (Over Temperature Protection), robust short-circuit protection and surge protection.

Application

Related Products  SP5563HTM Full HD Box IP Camera  SP5582HTM Full HD Fixed Dome IP Camera  SP5591HTM Full HD Bullet IP Camera



16-Port PoE Switch

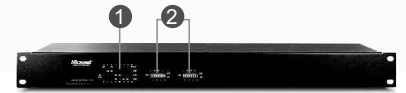
SPECIFICATION AND PRODUCT FEATURES

Model	SP6016PH
Standards	IEEE 802.3 10BaseT IEEE 802.3u 100BaseTX IEEE 802.3x Flow Control IEEE 802.3af compliant
Features	MAC Address: 2K Buffer Memory: 512K bits Transmission Method: Store and Forward
Filtering/Forwarding Rates	100Mbps port - 148,800pps 10Mbps port - 14,880pps
Transmission Media	10BaseT Cat. 3, 4, 5 UTP/STP 100BaseTX Cat. 5 UTP/STP
PoE on each Port	16 Ports:7.5Watts / 8 Ports:15.4 Watts
Output PoE Pin	4,5,7,8
LED Indicators	Power, LAN1~16 port , PoE 1~16 port
Power Adaptor	Input: 100-240VAC, 50~60Hz, Output: 48VDC/2.5A (120W)
Dimensions	188 x 118 x 38 mm (L x W x H)
Weight	1.5 kg
Operating Temperature	0 to 50°C
Humidity	10 to 90% RH (non-condensing)
Certifications	FCC Class A, CE

The product specifications are subject to change without prior notice

ORDERING INFORMATION

Model	Description
SP6016PH	16-Port PoE Switch



16-Port PoE Switch

Model No. SP6016PH

- ① LED Indicator
- ② Power DIP On/Off
- ③ DC Power Jack
- ④ RJ45 connector

COMPANION PRODUCTS

Consider the following Micronet products as a factor in your network planning.

- Ethernet Switch
- Industrial Ethernet
- IP Surveillance
- Wireless LAN
- VDSL · ADSL and Broadband
- IP Telephony
- KVM Switch
- Network Appliance
- Structured Cabling System

Copyright 2012 Micronet Communications Inc. All technical information in this document is subject to change without prior notice. Micronet, EtherFast and MicroView are registered trademarks of Micronet Communications Inc. All other trademarks and registered trademarks are properties of their respective holders.

Micronet Communications Inc.

E-mail: sales@micronet.com.tw ; support@micronet.com.tw ; Web: www.micronet.com.tw

Distributor: