


## Step 2

When the installation is completed. Please run "Micronet IP Scan Utility". The utility will search for all cameras available on your local network. You can click 'Search Camera' button to search for cameras on your network again.

 Search Camera icon

When a (or more) camera is found, select it by mouse to highlight it, and then click 'Browse Camera via Web' button to launch web browser to connect to IP camera.

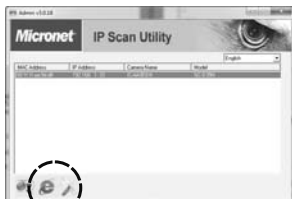
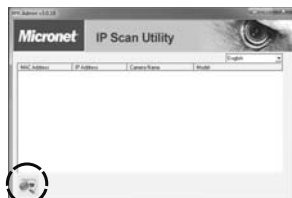
If the 'IP Address' of camera is '0.0.0.0', please click 'Configure Camera' button.

 'Browse Camera via Web' icon

 'Configure Camera' icon

You'll be prompted to input username and password. Username is '**root**', password is '**pass**'.

IP Camera is working through the network (TCP/IP Protocol). The IP address setting must be correct, or you cannot access to the camera. The wizard program will detect the IP address status of your network automatically and suggest a free IP address for the Camera. You can accept the suggested value or enter the value manually. Click "OK" to apply the configuration.



5

**Note:** If you don't know how to specify an IP address for your camera, please ask your network administrator or experienced technician.

Or select "DHCP" to obtain an auto IP setting from DHCP server and click "OK" to apply the configuration.

Now you can use web browser to connect to IP camera by inputting IP camera's IP address in the web browser's address bar, or click 'Browse camera via Web' icon.


You'll be prompted to input username and password, click 'OK' button when finish.

If you can't see this login window, please go back to Utility and click 'Configure Camera' icon to set the IP address of the camera before it can be connected.

User name: **root**

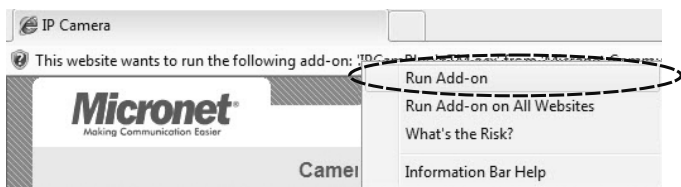
Password: **pass**

After logged on, you should see the following messages appear at the top of Internet Explorer

 This website wants to run the following add-on: 'IPCamPluginTM.ocx' from 'Micronet Communications Inc.'. If you trust the website and the add-on and want to allow it to run, click here...

6

Right-click on the message, and click 'Install ActiveX Control...'



When you see this message, click 'Install' to install required ActiveX control



You should be able to see the images captured by the camera now.

For advanced functions, please refer to the user's manual

(on supplied CD-ROM)



P/N 2300-0659

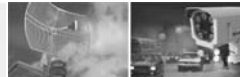


### WEEE Directive & Product Disposal

At the end of its serviceable life, this product should not be treated as household or general waste. It should be handed over to the applicable collection point for the recycling of electrical and electronic equipment, or returned to the supplier for disposal.

7

Communicate via **Micronet** network



**Micronet**  
Making Communication Easier

Quick Installation Guide

## Megapixel IP Camera

Model No.: SP5522SP/SP5522SW  
Ver 1.1



Model No.: SP5522SW  
Wireless 802.11n

Model No.: SP5522SP  
PoE 802.3af

www.micronet.com.tw

## Introduction

Thank you for purchasing Micronet SP5522 IP camera! This IP camera is an ideal product for all kinds of video-surveillance purposes, like home/office safety, kid/pet monitoring, and remote video acquire etc. Unlike conventional close-circuit video camera, you're not limited to the length of cable! Once this IP camera is connected to Internet, you can receive video from anywhere in the world where Internet access is available.

## Package Contents

Before you start installing the device, verify the following items are in the package:

- 1 x Internet Camera
- 1 x Power Adapter
- 1 x Antenna (SP5522SW only)
- 1 x Camera Stand
- 1 x Ethernet Cable
- 1 x Quick Installation Guide
- 1 x CD (Including Manual/Utility/Driver)

If any of the above items are missing, please contact your supplier.

## System Requirement

System requirement for PC, MAC or Notebook PC to access the Internet Camera are:

- Operating System: Windows XP SP2, Vista 32/64 bit, Windows 7 32/64 bit
- CPU: 2.0Ghz or above (2.4GHz plus processor with 1GB memory and a 256MB videocard is required for multiple camera viewing and recording in IP Surveillance) Intel i3 CPU recommended
- Memory Size: 512MB or above 2GB recommended  
VGA Card Resolution: 1024 x 768 or above
- Internet Explorer 6 or above

1

## Camera Overview

### LED and Focusing (Front View)

The Camera head and its focus ring allow you to modify the aim and focus of the Camera. To adjust the Camera's focus, rotate the dark focus ring. There are three LEDs indicating the camera status and networking status.

#### • LAN

When the Internet Camera is linking to wired network, the LED is lighting. The LED is flashing when video is transmitted or received through wired network.

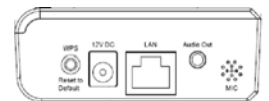
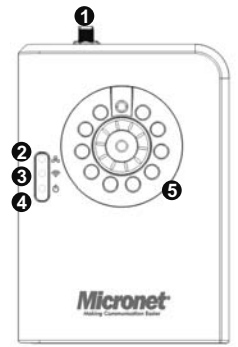
#### • WLAN

When the Internet Camera is linking to wireless network, the LED is lighting. The LED is flashing when video is transmitted or received through wireless network.

#### • Power

When the camera is power on and ready for access, the LED will light.

- ❶ Wireless SMA Connector (Wireless Model Only)
- ❷ LED Green: LAN Activity
- ❸ LED Amber: WLAN Activity (Wireless Model Only)
- ❹ LED Blue: Power On
- ❺ Focus Ring



### Camera Ports (Bottom View)

The Camera features two ports and a Reset button.

**WPS:** click the button on IP Cam and click it on the AP you want to connect wireless connection.

**Reset to Default Button:** Press and hold for more than 5 seconds to reset the camera settings to factory default value.

**Power Connector:** Connects to 12V DC power adapter

**Ethernet Connector:** Connect to your local area network

**Audio Connector:** Connects to external speaker for audio output

**Microphone:** Built-in microphone for voice pick-up

2

## Camera Installation

1. Unpack the Internet Camera package and verify that all the items listed are provided.
2. Connect the Internet Camera to your network by attached the network cable from the switch/router to the LAN port of the Internet Camera.
3. Connect the power adapter to the Internet Camera and plug the power adapter to power outlet. The Internet Camera will be powered on. When the Internet Camera is ready, the Ready LED will light.

**Note:** It is highly recommended to use the power adapter shipped with the Internet Camera, do NOT use any other power adapter from any sources.

## Software Installation

Follow the simple steps below to run the Install Wizard to guide you quickly through the Installation process. The following installation is implemented in Windows XP. The installation procedures in Windows 2000/XP/Server 2003/Vista/Win7 are similar.

### Step 1

Insert the CD shipped along with the Internet Camera into your CD-ROM drive. First install Micronet IP Scan Utility



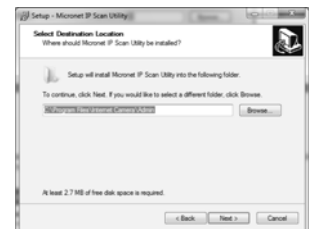
The following installation steps are the demonstration of "Micronet IP Scan Utility" and "MicroView"

Click "**Setup\_Micronet\_IPScan**" and when the following window appears, click "**Next**".

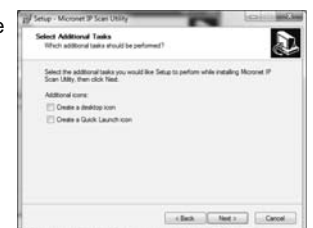


3

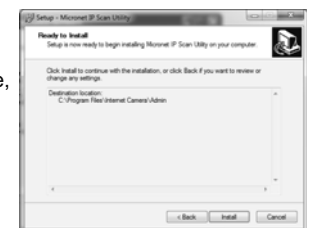
You can specify the destination folder of software installation, you can just use the default folder, and click "**Next**" to continue.



If you need installation program to create a desktop icon or a quick launch icon for you, click all items you need here, and click "**Next**" to continue.



Here lists all options you chose in previous steps, if everything's correct, click "**Install**" to start installing procedure, or click "**Back**" to go back to previous step to modify installing settings.



When you see this window, it means the software installing procedure is complete. Please click "**Finish**" to finish the procedure (IP camera surveillance software will start after you click "**Finish**" button, if you want to start it later, uncheck "**Launch IP Cam Surveillance Software**" box).



4