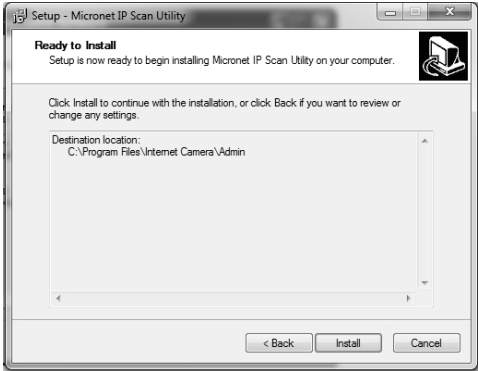
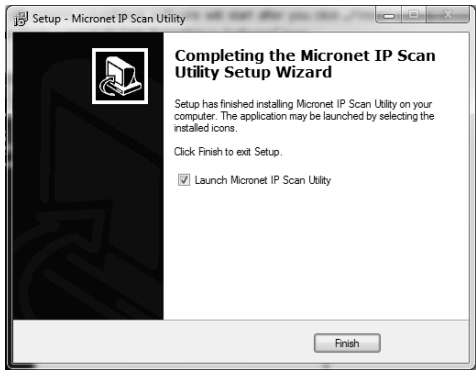


Here lists all options you chose in previous steps, if everything's correct, click **"Install"** to start installing procedure, or click **"Back"** to go back to previous step to modify installing settings.

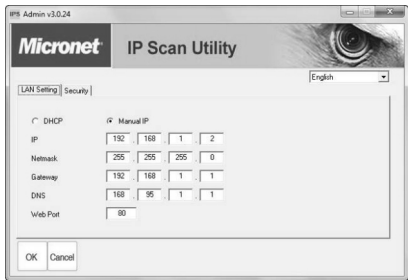


When you see this window, it means the software installing procedure is complete. Please click **"Finish"** to finish the procedure (IP camera surveillance software will start after you click **"Finish"** button, if you want to start it later, uncheck **"Launch IP Cam Surveillance Software"** box).

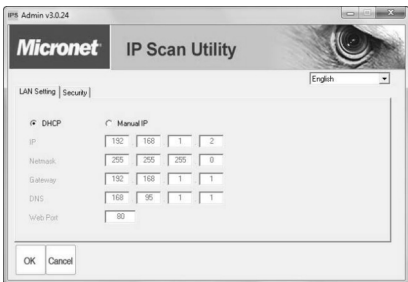


5

IP Camera is working through the network (TCP/IP Protocol). The IP address setting must be correct, or you cannot access to the camera. The wizard program will detect the IP address status of your network automatically and suggest a open IP address for the Camera. You can accept the suggested value or enter the value manually. If you enter the value manually, please be aware that the **"Subnet Mask"** must be the same for both the camera and the PC. Click **"OK"** to apply the configuration.



Or select **"DHCP"** to obtain an auto IP setting from DHCP server and click **"OK"** to apply the configuration.

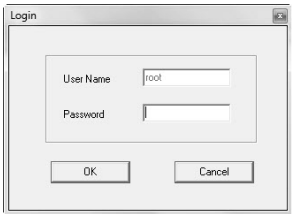


Step 2

When the installation is completed. Please run **" Micronet IP Scan Utility "**. IP Camera found in the network are listed. Choose the one you want to configure and click **"Setting Wizard"** to proceed.



The default username is root. Please enter the default password **"pass"** and click **"OK"** to login to the IP setup page.



6

Communicate via **Micronet** network



Quick Installation Guide

IP Camera

Model No.: SP5512 / SP5512W
Ver 1.1



Model No.: SP5512W
Wireless 802.11n

Model No.: SP5512
10/100M Ethernet

Introduction

Thank you for purchasing Micronet SP5512 series IP camera. This IP camera is an ideal product for all kinds of video-surveillance purposes, like home/office safety, kid/pet monitoring, and remote video acquire etc. Unlike conventional close-circuit video camera, you're not limited to the length of cable. Once this IP camera is connected to Internet, you can view the video from anywhere in the world where Internet access is available.

Package contents

Before you start installing the device, verify the following items are in the package:

- 1 x Internet Camera
- 1 x Power Adapter
- 1 x Camera Stand accessory kit
- 1 x 1m Ethernet Cable
- 1 x Quick Installation Guide
- 1 x CD (Including Manual/Utility/Driver)

If any of the above items are missing, please contact your supplier.

System Requirement

System requirement for PC, MAC or Notebook PC to access the Internet Camera are:

- Operating System: Windows XP SP2, Vista 32/64 bit, Windows 7 32/64 bit
- CPU: 2.0Ghz or above (2.4GHz plus processor with 1GB memory and a 256MB videocard is required for multiple camera viewing and recording in IP Surveillance) Intel i3 CPU recommended
- Memory Size: 512MB or above 2GB recommended
VGA Card Resolution: 1024 x 768 or above
- Internet Explorer 6 or above

1

Camera Installation

Step1

Unpack the Internet Camera package and verify that all the items listed in the Chapter 1 are provided.

Step 2

Connect the Internet Camera to your network by attached the network cable from the switch/router to the LAN port of the Internet Camera.

Step3

Connect the power adapter to the Internet Camera and plug the power adapter to power outlet. The Internet Camera will be powered on. When the Internet Camera is ready, the Green LED will light up

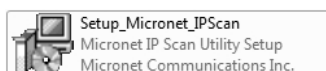
Note: For your safety, only use the power adapter included with the camera.

Software Installation

Follow the steps below to run the Install Wizard to guide you quickly through the Installation process. The following installation is implemented in Windows XP. The installation procedures in Vista/Win7 are similar.

Step 1

Insert the CD shipped along with the Internet Camera into your CD-ROM drive. First install Micronet IP Scan Utility



Camera Overview

LED (Front)

There are two LEDs indicating the camera status and networking status.

• Green

Steady: System is ready

Blinking: System is booting.

• Blue

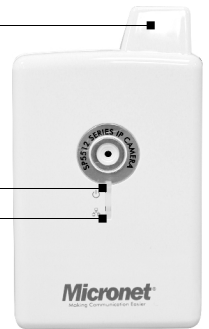
Steady: LAN is connected.

Blink: WLAN is activated.

Antenna
(Wireless Model Only)

LED Blue:
Status

LED Green:
WLAN status



Camera Ports (Rear)

The Camera features two ports and a button.

Button: 1 click for WPS function(wireless model) or hold for more than 5 seconds to reset the camera settings to factory default value.

Power Jack: Connect to power adapter for power supply with 5V DC.

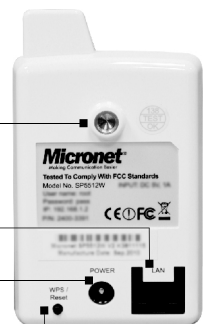
LAN Jack: Connect to your local area network by network cable.

Mounting hole for stand

LAN port

Power Jack With 5V DC

WPS
Reset to Default



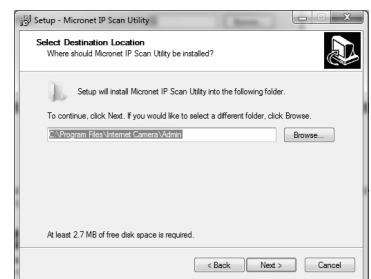
2

The following installation steps are the demonstration of "Micronet IP Scan Utility"

Click "Setup_Micronet_IPScan" and when the following window appears, click "Next".



You can specify the destination folder of software installation, you can just use the default folder, and click "Next" to continue.



If you need installation program to create a desktop icon or a quick launch icon for you, click all items you need here, and click "Next" to continue.

