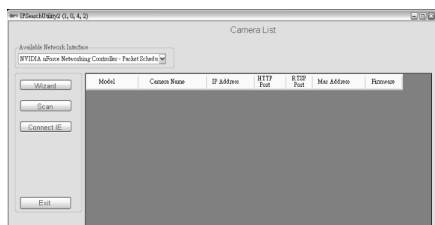


## Software Installation

The camera setup wizard, **IPSearchUtility2**, that comes with your camera is a conveniently utility to search the connected camera within the network from your computer.

### To install the utility on your computer:

1. Insert the Installation CD into the computer's CD-ROM/ DVD-ROM drive.
2. The CD Menu should pop up automatically. Go into "Software/Utility" and double click "IPSearchUtility2" to initiate the setup. Follow the prompts to complete the installation.
3. When done, the IPSearchUtility2 icon will display on the desktop. Double-click on the icon to launch the utility.
4. From the Control Panel, you can:



- Check the connected camera(s) from the **Camera List**, such as the IP Address, Camera Name, MacAddress, and more.
- Click **Wizard** to change the IP address of the selected camera.
- Click **Scan** to search the camera within the network.
- Click **Connect IE** to access the camera using Internet Explorer.
- Click **Exit** to end the utility.

5

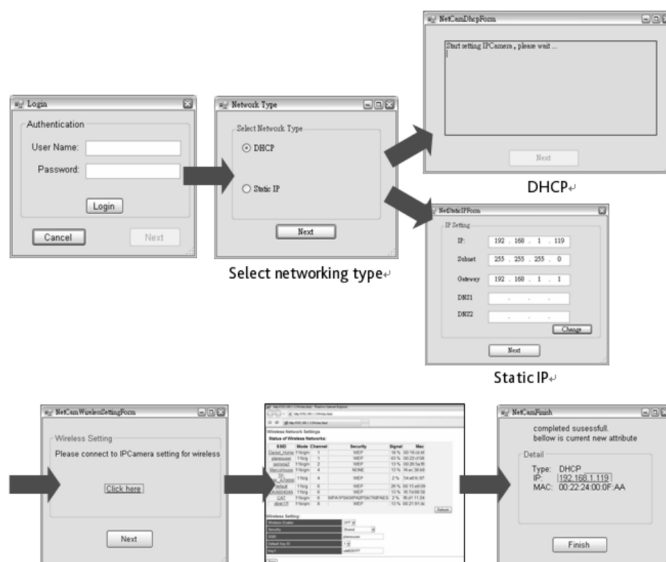
### To set up the camera using the wizard:

1. Launch IPSearchUtility2 on your computer.
2. Select the camera you want and then click Wizard.
3. When prompted, enter the **User Name** and **Password** to access the camera.

**The default User name is "root" and the default password is "pass".**

4. Follow the prompts to complete the networking settings for the camera, including:

- select networking type (**DHCP** or Static IP)
- configure wireless network (for wireless model only)



6

## Managing the Camera

The camera comes with a browser-based Configuration Utility that allows you to integrate it into your network easily. You can access the camera via Internet Explorer:

1. Launch Internet Explorer, and then enter the camera's IP address in the URL bar of the browser and then press ENTER.

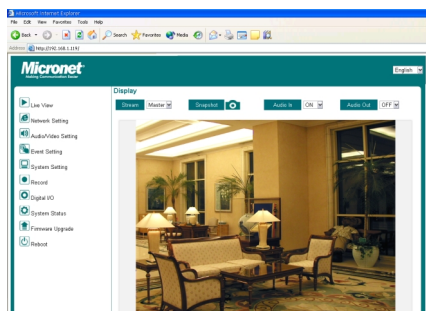
**The default IP address of the camera is "192.168.1.2".**

2. Enter the User name and password in the Login window.

**The default User name is "root" and the default password is "pass".**

If you are the first time to access the camera, it may be required to install a plug-in for the camera. Permission request depends on the Internet security settings of your computer. Follow the prompts to complete the plug-in installation.

3. When you access the camera's Configuration Utility, the main screen will appear as below:



#### WEEE Directive & Product Disposal

At the end of its serviceable life, this product should not be treated as household or general waste. It should be handed over to the applicable collection point for the recycling of electrical and electronic equipment, or returned to the supplier for disposal.



Communicate via **Micronet** network



**Micronet**  
Making Communication Easier

### Quick Installation Guide

## Cube Wireless / PoE Network Camera

Model No.: SP5220W / SP5220P

V1.1



Introduction

Micronet SP5520W/WP5520P network camera is capable of serving real-time streaming and makes image quality more smoothly. In addition to MJPEG real time streaming, this camera develops H.264 codec to apply for high resolution digital broadcast. Attributing to the network camera's flexible platform, the camera can be applied in various installation locations including shops, stores, banks, parking lots, factories and building surveillance.

This Quick Installation Guide will walk you through the steps of setting up your network camera. For further details, please refer to the User's Manual stored in the installation CD that comes in the product package.

Package Contents

Check the following items that are included in the package. Contact the authorized dealer of your locale immediately if any item contained is damaged or missing.

- Network camera x 1
- DC power adapter x 1\*
- Wireless antenna x 1\*\*
- Camera stand x 1
- Ethernet cable (RJ-45 type) x 1
- Installation CD x 1
- Quick Installation Guide x 1

\* Optional for PoE model.  
\*\* For wireless model only.

Camera Features

- H.264, Mpeg4 and MJPEG compression supported
- Built-in IR LEDs
- Built-in microphone (2-way audio function supported)
- Built-in 802.11b/g/n WLAN \*\*
- Motion detection supported
- Compliant with IEEE802.3af standard\*
- WPA2-PSK supported\*\*
- Firmware upgradeable

\* Optional for PoE model.  
\*\* For wireless model only.

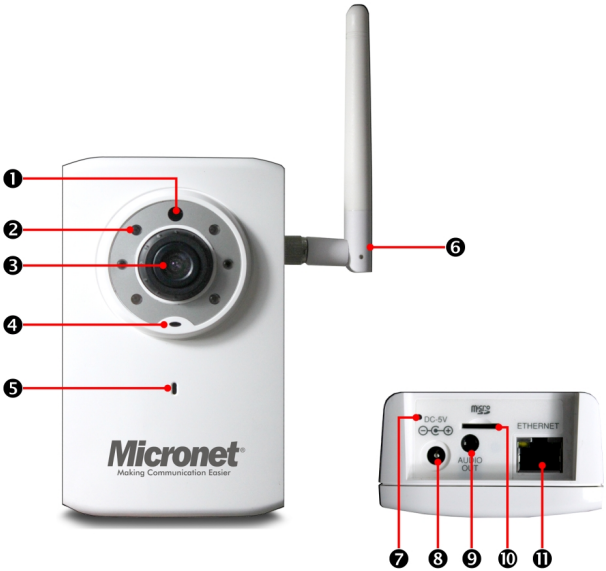
System Requirements

Minimum system requirement:

- CPU: Pentium 4 class, 2.0GHz
- Memory: 512MB RAM
- Hard disk drive: 500MB of available space
- GPU: AGP card, 128MB RAM; resolution @ 800x600 or above
- Operating system: Microsoft Windows XP, Vista, and Win 7
- Browser: Microsoft Internet Explorer 7.0 and above

**Note:** When you connect multiple cameras to monitor different places within your surveillance application, it is recommended to use high-performance computer and networking to approach better effect while transmitting the image.

Component Functions

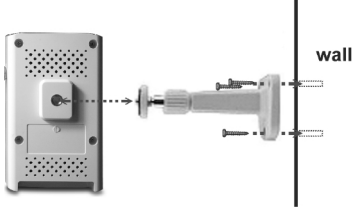


- 1.Light sensor.
  - 2.Infrared LEDs
  - 3.Lens assembly
  - 4.LED indicator
  - 5.Built-in microphone
  - 6.Wireless antenna\*
  - 7.Reset button
  - 8.DC 5V power input
  - 9.Audio output
  - 10.MicroSD card slot
  - 11.Ethernet port
- \* For wireless model only.

Hardware Installation

• Installing the camera stand

Install the camera to the camera stand by screwing the swivel base to the hook-up (on the back panel of the camera), and then you can mount the camera stand on the wall (or ceiling) through the three screw holes.



• Connecting the cables



To connect the Ethernet cable:

Use the RJ-45 type Ethernet cable to connect the camera to your local area network (LAN). Plug one end of the Ethernet cable to the Ethernet port on the bottom panel of the camera and the other end to an active port on the switch/router of the network.

To connect the DC power adapter (optional for PoE model):

Plug the AC power adapter cable to the DC power input on the bottom panel of the camera and the power plug to the wall socket. The camera will be powered on automatically when you connect the AC power adapter. The power status can be indicated from the LED on the front