

Communicate via ***Micro network***



Micronet®
Making Communication Easier

150Mbps Wireless Broad-band Router User's Manual

Model No.: SP916NL



Contents

3 HOW TO CONFIGURE TO ACCESS THE INTERNET	15
3.1 HOW TO SET THE NETWORK CONFIGURATIONS.....	15
3.2 LOG IN TO THE ROUTER.....	19
3.3 FAST INTERNET ACCESS.....	20
3.4 FAST ENCRYPTION.....	21
4 ADVANCED SETTINGS.....	23
4.1 SYSTEM STATUS	23
4.2 WAN SETTINGS.....	24
4.3 LAN SETTINGS.....	27
4.4 DNS SETTINGS.....	27
4.5 WAN MEDIUM TYPE.....	28
4.6 MAC CLONE.....	29
4.7 BANDWIDTH CONTROL.....	30
4.8 TRAFFIC STATISTICS	33
5 WLAN SETTINGS	35
5.1 WIRELESS BASIC SETTINGS.....	35
5.2 WIRELESS SECURITY SETTINGS.....	39
5.2.1 WPS SETTINGS.....	40
5.2.2 WPA- PSK.....	41
5.2.3 WPA2- PSK.....	42
5.3 WIRELESS ACCESS CONTROL.....	43
5.4 CONNECTION STATUS.....	44
6 DHCP SERVER.....	45

6.1 DHCP SERVER	45
6.2 DHCP CLIENT LIST.....	45
7 VIRTUAL SERVER.....	47
7.1 PORT RANGE FORWARDING.....	47
7.2 DMZ SETTINGS.....	50
7.3 UPNP SETTINGS.....	50
8 SECURITY SETTINGS.....	52
8.1 CLIENT FILTER SETTINGS.....	52
8.2 MAC ADDRESS FILTER.....	53
8.3 URL FILTER SETTINGS.....	54
8.4 REMOTE WEB MANAGEMENT.....	55
9 ROUTING SETTINGS.....	57
9.1 ROUTING TABLE.....	57
9.2 STATIC ROUTING.....	57
10 SYSTEM TOOLS.....	59
10.1 TIME SETTINGS.....	59
10.2 DDNS.....	59
10.3 BACKUP/RESTORE	61
10.4 RESTORE TO FACTORY DEFAULT	62
10.5 UPGRADE	63
10.6 REBOOT THE ROUTER.....	63
10.7 PASSWORD CHANGE.....	64
10.8 SYSLOG.....	64
10.9 LOG OUT	65
APPENDIX 1 GLOSSARY.....	67
APPENDIX 2 PRODUCT FEATURES.....	68

<u>APPENDIX 3 FAQ.....</u>	<u>69</u>
<u>APPENDIX 4 CLEAR WIRELESS CONFIGURATION .</u>	<u>71</u>
<u>APPENDIX 5 REGULATORY INFORMATION.....</u>	<u>75</u>

1 Introduction

Micronet SP916NL is an 11n Wireless Broadband Router. It is compliant with IEEE 802.11n and backward compatible with IEEE 802.11b/g. It provides a better wireless signal for network than existing wireless 802.11g technology.

1.1 Package contents

Prior to the installation of the device, please verify the following items are in the package:

- 1 x 11N AP Router
- 1 x Quick Installation Guide
- 1 x Product CD
- 1 x Power Adapter
- 1 x RJ-45 1 meter cable

If any of listed items are missing or damaged, please contact the Micronet reseller from whom you purchased for replacement immediately.

1.2 Product Features

- Includes router, wireless access point, four-port switch and firewall in one
- Complies with the latest IEEE802.11n standard and IEEE802.11 b/g standards
- Increases 6 times coverage distance than 802.11g standard and reduces the dead spots in the coverage area
- Supports transmitting rate 3 times than wireless G-products
- Supports 64/128-bit WPA, WPA2, WPA&WPA2 encryption methods
- Supports RTS/CTS protocol and data partitioning function
- Provides one 10/100Mbps Auto-Negotiation Ethernet WAN port
- Provides four 10/100Mbps Auto-Negotiation Ethernet LAN ports
- Supports xDSL/Cable MODEM, static and dynamic IP in community networking
- Supports MAC address/ Port filtering
- Supports remote Web management and simple Web upgrading method
- Supports Auto MDI/MDIX
- Provides syslog to record the status of the router

- Supports auto negotiation/manual mode for 802.11b/802.11g
- Supports UPnP and DDNS
- Supports LAN access control to the Internet
- Supports virtual server, DMZ host
- Supports WDS wireless network extension
- Supports broadband control function

1.3 LED Indicator and Port Description

Front Panel and LED Indicator Show



LED indicator description on front panel:

POWER 

When turns green, Always ON indicates the power connects well.

SYS 

When turns green, blinking indicates the system runs

well.

WPS 

When blinking, it indicates the device is negotiating with client in WPS mode.

WLAN 

Wireless signal LED indicator. When turns green, blinking indicates the wireless function is enabled.

LAN (1,2,3,4)

Wired local network LED indicator. Always ON indicates it is connected with Ethernet device; blinking indicates the device is transmitting and/or receiving data.

WAN 

Wide area network indicator. Always ON indicates it is connected with Ethernet device; blinking indicates the device is transmitting and/or receiving data.

Back Panel Show:



Rear Panel:

POWER

The jack is for power adapter connection. Please use the included 9V DC power adapter.

WAN

A 100Mbps Ethernet port can be connected with MODEM, Switch, Router and other Ethernet device for Internet connecting to DSL MODEM, Cable MODEM and ISP.

LAN (1, 2, 3, 4)

4 10/100Mbps Ethernet ports can be connected with Ethernet switch, Ethernet router and NIC card.

RESET/WPS

The system reset button. Press this button for 7 seconds, the settings configured in this device will be deleted and it will restore the settings to the default one. Press it for 1 second, the WPS feature will be enabled and WPS indicator will be shown blinking.

2 Product Installation

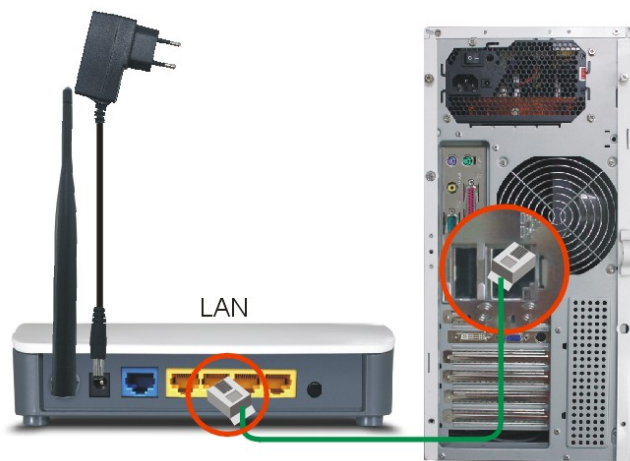
2.1 Hardware Installation

After you unpack the box, please follow the steps below to connect. For better wireless performance, please put the device in the middle of wireless coverage area.

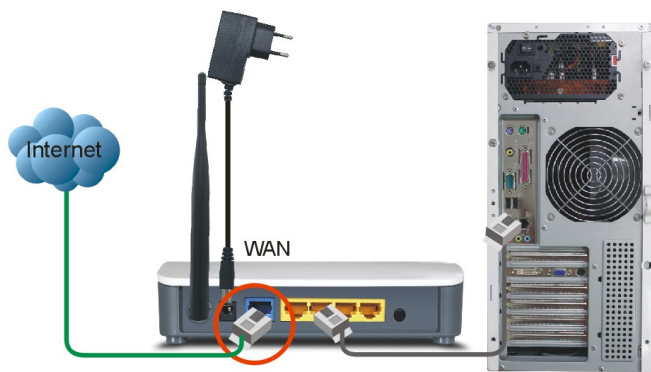
1. Please use the included power adapter to power on the Router. **IMPORTANT:** Use of a different power adapter could cause damage and void the warranty for this product.



2. Please connect the LAN port of the Router to the network adapter of your computer with a cable.



3. Please connect your broadband line provided by your ISP to the WAN port.



2.2 Network Application Plan

Usually wireless LAN Network is deployed in a planned environment where each access point is located in a steady place with certain wireless coverage area for communication service. Generally speaking, it is in the center of the area to reduce “dead spot”.

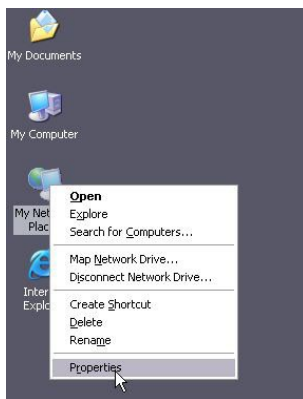


3 How to Login to the Router

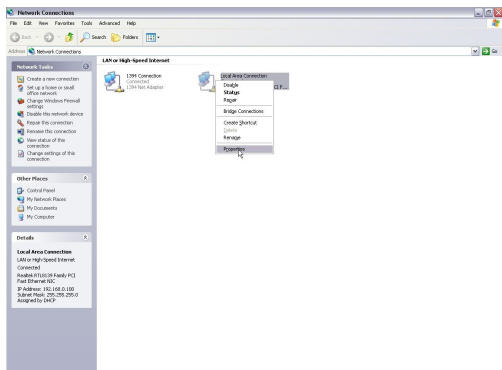
The chapter mainly presents how to enter the Router's Web page. After you have finished the hardware installation, the following steps will assist you to set the network configurations for your computer.

3.1 How to Set the Network Configurations

1. On your computer desktop right click "My Network Places" and select "Properties".



2. Right click “Local Area Network Connection” and select “Properties”.



3. Select “Internet Protocol (TCP/IP)” and click “Properties”.



4. Select “Obtain an IP address automatically” and “Obtain DNS server address automatically”. Click “OK” to save the configurations.



Or select “Use the following IP address” and enter the IP address, Subnet mask, Default gateway as follows:

IP Address: 192.168.1.XXX: (XXX is a number from 2–254)

Subnet Mask: 255.255.255.0

Gateway: 192.168.1.1

Certainly you need to input the DNS server address provided by your ISP. Otherwise, you can use the Router’s default gateway as the DNS proxy server. Click “OK” to save the configurations.

3.2 Login to the Router

1. To access the Router's Web-based interface, launch a web browser such as Internet Explorer or Firefox and enter the Router's default IP address, <http://192.168.1.1>. Press "Enter".

2. Input the "1234" in Password. Click "OK".

A. It indicates the router's WAN port hasn't been connected with the network cable.

Login

No Internet access, please check your online settings!

Password: (Initial password: 1234)

B. It indicates the Router is well connected with the ISP.

Login

Password: (Initial password: 1234)

3. If you enter the correct password, the screen will be the next one.

Micronet
Making Communication Easier

Advanced Settings

Internet Access

Access Method: ☒ ADSL Dialup ☐ DHCP

Access Account:

Access Password:

For other access methods, click "Advanced Settings"

Wireless encryption

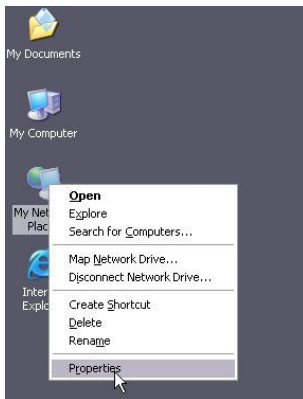
Wireless password: (can only enter characters)

3 How to configure to access the Internet

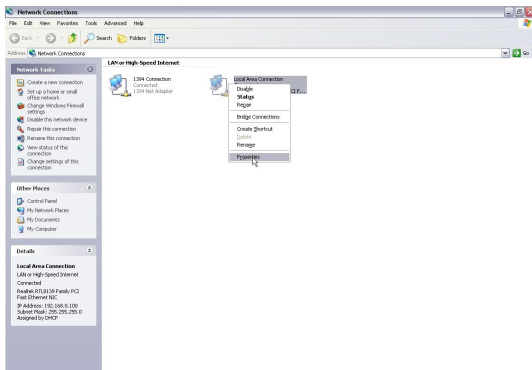
3.1 How to Set the Network Configurations

Network Configurations under windows XP

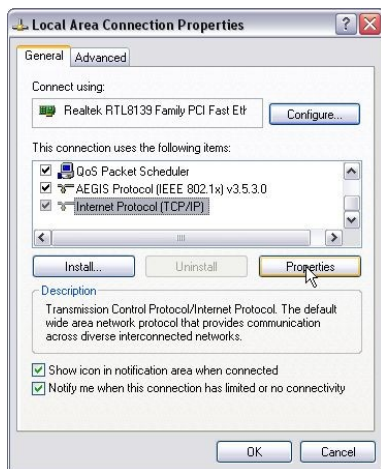
1. Right click **"My Network Places"** on your computer desktop and select **"Properties"**.



2. Right click **"Local Area Connection"** and select **"Properties"**.



3. Select **"Internet Protocol (TCP/IP)"** and click **"Properties"**.



4. Select **“Obtain an IP address automatically”** and **“Obtain DNS server address automatically”**. Click **“OK”** to save the configurations.



Or select **“Use the following IP address”** and enter the IP address, Subnet mask, Default gateway as follows:

- **IP Address:** 192.168.1.XXX: (XXX is a number from 2–254)
- **Subnet Mask:** 255.255.255.0
- **Gateway:** 192.168.1.1
- **DNS server:** You should input the DNS server address provided by

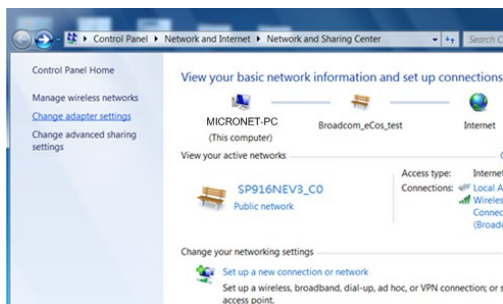
your ISP. Otherwise, you can enter 168.95.1.1. Click "OK" to save the configurations.

Network Configurations under windows 7

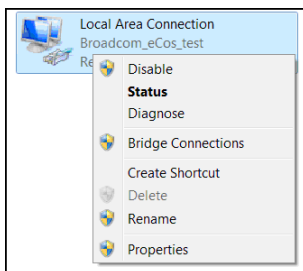
1. Click the network icon on the lower right corner of your computer desktop, and then click" Open Network and Sharing Center".



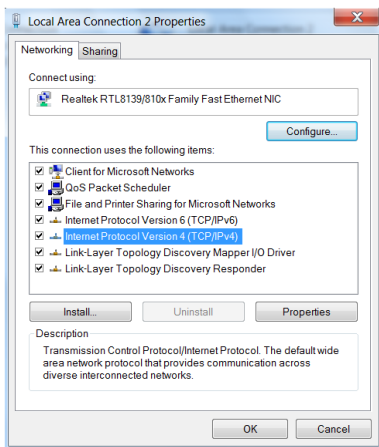
2. Click "Change adapter settings" on the left side of the window.



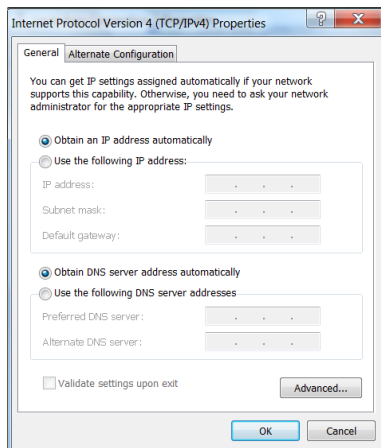
3. Right click "Local Area Connection" and select "Properties".



4. Double click" Internet Protocol Version 4(TCP/IPv4)".



5. Select "**Obtain an IP address automatically**" and "**Obtain DNS server address automatically**". Click "**OK**" to save the configurations.

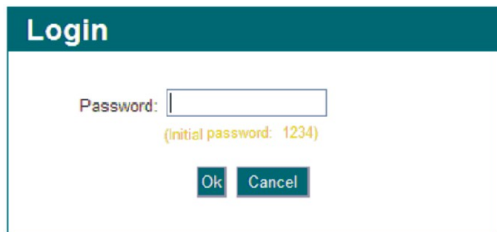


Or select “**Use the following IP address**” and enter the IP address, Subnet mask, Default gateway as follows:

- **IP Address:** 192.168.1.XXX: (XXX is a number from 2–254)
- **Subnet Mask:** 255.255.255.0
- **Gateway:** 192.168.1.1
- **DNS server:** You should input the DNS server address provided by your ISP. Otherwise, you can enter 192.168.1.1. Click “OK” to save the configurations.

3.2 Log in to the Router

1. To access the Router’s Web-based Interface, launch a web browser such as Internet Explorer or Firefox and type in <http://192.168.1.1>. Press “Enter”.



Micronet
Making Communication Easier

Advanced Settings

Internet Access

Access Method: ☒ ADSL Dial-up ☐ DHCP

Access Account:

Access Password:

For other access methods, click "Advanced Settings"

Wireless encryption

Wireless password: (can only enter characters)

3.3 Fast Internet Access

Two kinds of fast access methods are provided on the router's web-based utility: ADSL dial-up and DHCP.

If you select ADSL dial-up, you only need to enter the access account and access password as well as the wireless password, and then click "Ok" to complete the settings.

Micronet
Making Communication Easier

Advanced Settings

Internet Access

Access Method: ☒ ADSL Dial-up ☐ DHCP

Access Account:

Access Password:

For other access methods, click "Advanced Settings"

Wireless encryption

Wireless password: (can only enter characters)

If you select DHCP, you only need to enter the wireless password and click "Ok" to complete the settings.

Micronet
Making Communication Easier

Advanced Settings

Internet Access

Access Method: ☒ ADSL Dial-up ☐ DHCP

Access Account:

Access Password:

For other access methods, click "Advanced Settings"

Wireless encryption

Wireless password: (can only enter 8 characters)

OK Cancel

The default access method is ADSL dial-up and the access account and access password are the same as the ADSL dial-up account and password, which you can inquire your broadband ISP. For other access methods, please refer to WAN settings in chapter 4. The wireless password can only consist of 8 characters, the default is 12345678 and you can modify it when necessary.

3.4 Fast Encryption

The router provides two encryption setting screens, one is simple and easy, the other is advanced (For advanced setting, please refer to chapter 5.2).

Simple and easy screen:

Log on to the router's web-based utility and you may set encryption for the router. The default adopts WPA-PSK mode and AES Algorithm. The default password is 12345678, as shown below.

Micronet
Making Communication Easier

Advanced Settings

Internet Access

Access Method: ☒ ADSL Dial-up ☐ DHCP


Access Account:

Access Password:

For other access methods, click "Advanced Settings"

Wireless encryption

Wireless password: (can only enter 8 characters)

 **NOTE:** The wireless password can only be 8 characters in length and the default is 12345678, you can modify it when necessary.

4 Advanced Settings

4.1 System Status

System status screen allows you to view the router's WAN port status and system status.

The screenshot displays the 'System status' page of a Micronet 150M Wireless Broadband Router. The page is divided into two main sections: 'WAN status' and 'System status'. The 'WAN status' section shows the connection status as 'Disconnected', along with fields for WAN IP, Subnet Mask, Gateway, DNS server, and Alternate DNS server. The 'System status' section shows the LAN MAC address, WAN MAC address, System time, Running time, Connected client count, Software version, and Hardware version. A help information box on the right provides details about the connection type, connection time, running time, and system version.

WAN status:

- Connection status: Disconnected
- WAN IP
- Subnet Mask
- Gateway
- DNS server
- Alternate DNS server
- Connection type: PPPoE
- Connection time: 00:00:00
- Connected / Disconnected

System status:

- LAN MAC address: 00:11:3B:24:3E:38
- WAN MAC address
- System time: 2011-04-01 01:44:15
- Running time: 01:44:15
- Connected client: 2
- Software version: V5.07.1B_EN_NUT
- Hardware version: V1.0

Help information:

- Connection type: It displays the current WAN connection type.
- Connection time: The connected time of the router's WAN port when the connection type is dynamic IP or PPPoE.
- Running time: The time that the router has been enabled.
- System version: The router's firmware version.

- **Connection status:** It displays the router's WAN connection status.
Disconnected: It indicates the router's WAN port hasn't been connected with the network cable.
Connecting: It indicates the router's WAN port is obtaining IP address.
Connected: It indicates the Router is well connected with the ISP.
- **WAN IP:** IP address obtained from ISP.
- **Subnet mask:** Obtained from ISP.
- **Gateway:** Obtained from ISP.
- **DNS server:** Obtained from ISP.
- **Alternate DNS server:** Obtained from ISP.

- **Connection type:** It displays your current access method.

System status:	
LAN MAC address	00:11:3B:24:3E:38
WAN MAC address	00:11:3B:24:3E:28
System time	2011-04-01 00:11:59
Running time	00:11:59
Connected client	2
Software version	V5.07.18_EN_NUT
Hardware version	V1.0

- **LAN MAC address** It displays the Router's LAN MAC address.
- **WAN MAC address** It displays the Router's WAN MAC Address.
- **System time** It displays the system's updated time
- **Connected client** It displays the number of the connected computers (normally it displays the number of clients whose IP addresses obtained via DHCP server)
- **Software version** It displays the Router's software version
- **Hardware version** It displays the Router's hardware version.

4.2 WAN Settings

Virtual Dial-up (PPPoE)

Model No. SP916NL
150M Wireless Broadband Router

[Initial page settings](#) | [Log out](#)

Advanced settings
Wireless settings
DHCP Server
Virtual server
Security settings
Routing settings
System tools

System status
WAN settings
LAN settings
DNS settings
WAN medium type
MAC clone
Bandwidth control
Traffic statistics

Mode: **PPPOE**

Access Account:

Access Password:

MTU: (Do not modify it unless necessary, the default is 1492)

Service name: (Do not enter the information unless necessary.)

Server name: (Do not enter the information unless necessary.)

Select the corresponding connection mode according to your situation.

☒ Connect automatically: Connect automatically to the Internet after rebooting the system or connection failure.

☐ Connect on demand: Re-establish your connection to the Internet when there's data transmitting.

Max idle time: (60-3600 Second)

☐ Connect manually: Connected to the internet manually by the user.

☐ Connect on fixed time: Connect automatically to the Internet during the time you fix.

Note: The "Connect on fixed time" function goes into effect only when you have set the current time in "Time Settings" from "System Tools".

Connection time: from hours minutes to hours minutes

Help information
PPPOE: Inquire your ISP to make sure whether you can use PPPoE. If they provide PPPoE, then enter your username and password.

- **Mode:** Show your current connection mode.
- **Access Account:** Enter the account provided by your ISP.
- **Access Password:** Enter the password provided by your ISP.
- **MTU:** Maximum Transmission Unit. It is the size of the largest data packet that can be sent over the network. The default value is 1492. Do NOT modify it unless necessary, but if a specific website or web application software cannot open or be enabled, you can try to change the MTU value to 1450, 1400, etc.
- **Service Name:** The connection name for current PPPOE, enter it if necessary; otherwise, leave it blank.
- **AC Name:** The service name, enter it if necessary; otherwise, leave it blank.
- **Connect Automatically:** Connect automatically to the Internet after rebooting the system or connection failure.
- **Connect on Demand:** Re-establish your connection to the Internet after the specific time (Max Idle Time). Zero means you are connected to the Internet all times. Otherwise, enter the minutes to

be elapsed before you are disconnected from the Internet.

- **Connect Manually:** Connect to the Internet by users manually.
- **Connect on Fixed Time:** Connect to the Internet during the time you fix automatically.



NOTE:

The “**Connect on Fixed Time**” goes into effect only when you have set the current time in “**Time settings**” from “**System tools**”.

Static IP

If your ISP provides you the static IP, please choose static IP, and you need to enter the IP address, subnet mask, gateway, DNS server and alternate DNS server provided by your ISP or network administrator.

System status WAN settings LAN settings DNS settings WAN medium
type MAC clone Bandwidth control Traffic statistics

Mode	Static IP
IP address	192.168.20.1
Subnet Mask	255.255.255.0
Gateway	0.0.0.0
DNS server	192.168.1.254
Alternate DNS server	(Optional)
MTU	1500 (Do not modify it unless necessary, the default is 1500)

Ok Cancel

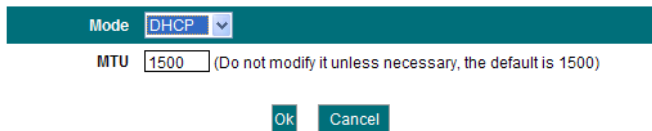
Help information
Static IP: If your broadband ISP provides you a static IP, please select the static IP mode.

- **Mode:** Show your current connection mode.
- **IP address:** Enter the WAN IP address provided by your ISP. If you are not clear, please inquire your local ISP.
- **Subnet mask:** Enter the WAN Subnet Mask provided by your ISP. Generally it is 255.255.255.0.
- **Gateway:** Enter the Gateway provided by your ISP. If you are not clear, please inquire your local ISP.
- **DNS server:** Enter the necessary DNS server provided by your ISP.
- **Alternate DNS server:** Enter the second DNS address if your ISP provides, which is optional.

Dynamic IP (Via DHCP)

If your connection mode is Dynamic IP, it means every time you access the Internet, you will get a different IP. You don't need to enter any parameters

in this mode, just Click “Ok” to finish the settings.



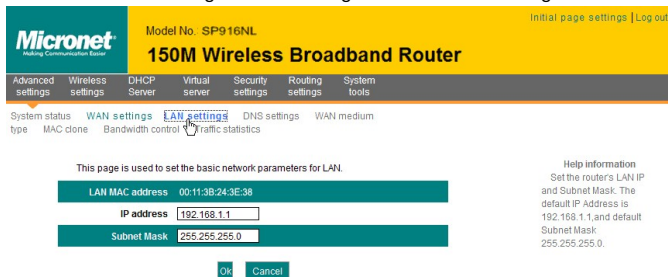
Mode **DHCP**

MTU **1500** (Do not modify it unless necessary, the default is 1500)

Ok Cancel

4.3 LAN Settings

Click “Advanced settings” –LAN settings to enter the following screen.



Micronet®
Making Communication Easier

Model No. SP916NL Initial page settings | Log out

150M Wireless Broadband Router

Advanced settings Wireless settings DHCP Server Virtual server Security settings Routing settings System tools

System status WAN settings **LAN settings** DNS settings WAN medium type MAC clone Bandwidth control Traffic statistics

This page is used to set the basic network parameters for LAN.

LAN MAC address 00-11-38-24-3C-38

IP address 192.168.1.1

Subnet Mask 255.255.255.0

Ok Cancel

Help information
Set the router's LAN IP and Subnet Mask. The default IP Address is 192.168.1.1, and default Subnet Mask: 255.255.255.0.

- **LAN MAC address:** The Router's LAN MAC address, which is unchangeable.
- **IP address:** The Router's LAN IP address (not your PC's IP address). The default value is 192.168.1.1; you can change it when necessary.
- **Subnet mask:** The Router's LAN subnet mask. The default value is 255.255.255.0



NOTE:

Once you modify the IP address, you need to remember it for next time you log in to the web-based utility.

4.4 DNS Settings

DNS stands for Domain Name System (or Service).

DNS setting	<input checked="" type="checkbox"/>
Primary DNS address	<input type="text" value="168.95.1.1"/>
Alternate DNS address (Optional)	<input type="text"/>

Note: After the settings are completed, reboot the device to activate the modified settings.

Ok Cancel

- **DNS setting:** Select to enable the DNS server.
- **Primary DNS address:** Enter the necessary address provided by your ISP.
- **Alternate DNS address:** Enter the second DNS address if your ISP provides, which is optional.

 **NOTE:**

After the settings are completed, reboot the device to activate the modified settings.

4.5 WAN Medium Type

Wired WAN and wireless WAN

 **NOTE:** This function applies only to some of the products.

WAN medium type:	<input type="radio"/> Wired WAN <input checked="" type="radio"/> Wireless WAN
SSID:	<input type="text" value="Default1"/>
Wireless WAN:	<input type="text" value="6"/>
Security Mode:	<input type="text" value="Disable"/>

Open scan

Ok Cancel

Wired WAN: In this mode, the cable is directly connected to the WAN port.

Wired WAN is the default mode.

Wireless WAN: Enable this mode if your ISP provides you wireless connection service or you want to use it to amplify wireless signals.

SSID: SSID (Service Set Identifier) is the identity of the wireless device. You can only access to the ISP' network by entering the correct SSID, namely the SSID of the ISP's wireless device. You can click the "Open scan" button to let the router automatically search the ISP's available SSID. The SSID can also be the SSID of the superior wireless device when using wireless bridge.

MAC: To connect to the ISP's wireless device, you need to know the device's MAC address. You can click the "Open scan" button to let the router automatically search the wireless device's MAC or superior wireless device's MAC.

Channel: The wireless device's communication channel. You must select the same channel as the ISP's wireless device to enable their communications. It can also be scanned by clicking the "Open scan" button.

Security mode: When the ISP wireless device is secured, the access device should set the same security mode, encryption mode and key as the ISP' wireless device.

For example

If your ISP wireless device's SSID is "wireless", then just enter the ISP's SSID, wireless MAC address, and channel respectively into the corresponding fields of the above picture. If the ISP device is secured, please set your router's encryption type the same as the ISP device's .Or you can click the "Open scan" button to let the router automatically fill in the SSID, Channel and wireless MAC. After saving, come back to the WAN Setting screen to select the corresponding WAN connection type to complete the settings (For example, if your ISP wireless device's connection type is dynamic IP, just select DHCP).

4.6 MAC Clone

MAC Address Clone

MAC Address: 00:11:3b:24:3E:38

Restore Default MAC Clone MAC Address

Apply Cancel

MAC Address clone: Some Internet service providers require end-user's MAC address to access their network. This feature copies the MAC address of your network device to the router.

MAC Address: The MAC address to be registered with your Internet service provider.

Restore Default MAC: Restore the default hardware MAC address.

Clone MAC: Register your PC's MAC address.

4.7 Bandwidth Control

Bandwidth control is used to limit the communication traffic of LAN computers when accessing the Internet. It can simultaneously control maximum of 254 PCs' traffic. In addition, IP address range configuration is supported.

Enable Bandwidth Control ☒ Enable

IP address: 192.168.1. ~

Upload/Download: Upload

Bandwidth range: ~ (KByte/s)

Enable: ☐

Add to list

No.	IP segment	Destination	Bandwidth range	Enable	Edit	Delete
-----	------------	-------------	-----------------	--------	------	--------

Ok Cancel

➤ **Enable Bandwidth Control:** To enable or disable the internal IP bandwidth control. The default is disabled.

- **IP Address:** The IP address range of the hosts whose traffic has been controlled. It can be a single IP address or IP address range.
- **Upload/Download:** To specify the traffic heading way for the selected IP addresses: upload or download.
- **Bandwidth Range:** The maximum and minimum upload/download data traffic of the hosts in specified IP range. The unit is KByte/s. The uplink of upload and download can not exceed the WAN port bandwidth limitation range.
- **Enable:** To enable the current edited rule. Otherwise, the rule will not go into effect.
- **Add to list:** After you edit the rule, click the “add to list” button to add the current rule to the rule list.

Here we take 2Mbps bandwidth as an example. Theoretically, the biggest downloading rate for 2Mbps bandwidth is 2Mbps=256KByte/s, and the biggest uploading rate is 512kbps=64KByte/s

Example 1

If you want to set the download rate of the computer at the IP address of 192.168.1.100 as 80-90KByte/s, upload rate as 10-15KByte/s, first add one upload rule as shown in the picture below:

Enable Bandwidth Control ☒ Enable

IP address: 192.168.1.100 ~ 100

Upload/Download: Upload

Bandwidth range: 10 ~ 15 (KByte/s)

Enable: ☐

Add to list

No.	IP segment	Destination	Bandwidth range	Enable	Edit	Delete
<div> <div>Ok</div> <div>Cancel</div> </div>						

1. Enter 192.168.1.100 in the IP address field
2. Select upload in the Upload/Download field.
3. Enter 10-15 in the bandwidth range field
4. Select “Enable”
5. Click “Add to list”
6. Click “Ok” to finish the upload rule settings.

And then add a download rule as shown in the picture below.

Enable Bandwidth Control ☒ Enable

IP address: 192.168.1.100 ~ 100

Upload/Download: Download

Bandwidth range: 80 ~ 90 (KByte/s)

Enable: ☐

Add to list

No.	IP segment	Destination	Bandwidth range	Enable	Edit	Delete
-----	------------	-------------	-----------------	--------	------	--------

Ok Cancel

The setting method is the same as the above.

Example 2 Set the download rate of all computers within the range of 192.168.1.2--192.168.1.254 as 100-120KByte/s, and the upload rate as 20-30KByte/s, as shown in the picture below.

Enable Bandwidth Control ☒ Enable

IP address: 192.168.1.2 ~ 254

Upload/Download: Upload

Bandwidth range: 20 ~ 30 (KByte/s)

Enable: ☐

Add to list

No.	IP segment	Destination	Bandwidth range	Enable	Edit	Delete
-----	------------	-------------	-----------------	--------	------	--------

Ok Cancel

Enable Bandwidth Control ☒ Enable

IP address: 192.168.1.2 ~ 254

Upload/Download: Download

Bandwidth range: 100 ~ 120 (KByte/s)

Enable: ☐

Add to list

No.	IP segment	Destination	Bandwidth range	Enable	Edit	Delete
-----	------------	-------------	-----------------	--------	------	--------

Ok

Cancel

The setting method is the same as **Example 1**.

4.8 Traffic Statistics

Traffic statistics is used to display the bandwidth that LAN PC used.

System status [WAN settings](#) [LAN settings](#) [DNS settings](#) [WAN medium type](#) [MAC clone](#) [Bandwidth control](#) [Traffic statistics](#)

☒ Enable traffic statistics

IP address	Uplink rate (KByte/s)	Downlink rate (KByte/s)	Sent message	Sent Bytes MByte	Received message	Received Bytes MByte
192.168.1.100	0.00	0.00	2	0.00	0	0.00

Ok

Cancel

Enable Traffic statistics: It is used to calculate the traffic used by the LAN computers. You can enable it to calculate the traffic for you. Usually, disable it to improve the router's data packet processing ability, and the default is disabled. When this function is enabled, the webpage will refresh automatically every five minutes, meanwhile, each computer's traffic value will refresh automatically.

- **IP address:** the IP address of the computer whose traffic is being calculated.
- **Uplink rate:** the data sending speed per second, the unit is KByte/s.
- **Downlink rate:** the data receiving speed per second, the unit is KByte/s.

- **Sent message:** the number of the calculated computer's data packets that are sent out through the router.
- **Sent Bytes:** the volume of the calculated computer's statistics that is sent out through the router
- **Received message:** the number of the calculated computer's the data packets that are received through the router.
- **Received Bytes:** the volume of the calculated computer's statistics that is received through the router.

5 WLAN Settings

5.1 Wireless Basic Settings

Micronet
Making Communication Easier

Model No. SP916NL
150M Wireless Broadband Router

Advanced settings | **Wireless settings** | DHCP Server | Virtual server | Security settings | Routing settings | System tools

Wireless Basic Settings | Wireless Security | Access Control | Connection Status

☒ Enable wireless function

Wireless Working Mode ☒ Wireless Access Point(AP) ☐ Network Bridge(WDS)

Network Mode 11b/g/n mixed mode

primary SSID Default1

secondary SSID

Broadcast(SSID) ☒ Enable ☐ Disable

AP Isolation ☐ Enable ☒ Disable

Channel 2437MHz (Channel 6)

WMM Capable ☒ Enable ☐ Disable

APSD Capable ☐ Enable ☒ Disable

Channel Bandwidth ☐ 20 ☒ 20/40

Extension Channel 2417MHz (Channel 2)

Ok Cancel

- **Enable wireless function:** Select to enable the Router's wireless features; deselect to disable it and all functions related with wireless are disabled.
- **Wireless working mode:** This router provides two kinds of working modes: Wireless Access Point(AP) and Network Bridge (WDS)

Wireless Access Point (AP)

- **Network Mode:** Select one mode from the drop-down list.
 - 11b mode** Select it if you have only Wireless-B clients in your network.
 - 11g mode** Select it if you have only Wireless-G clients in your

network.

11b/g mixed mode: Select it if you have only Wireless-B and Wireless-G clients in your network.

11b/g/n mixed mode: Select it if you have Wireless-B, Wireless-G and Wireless-N clients in your network.

- **SSID:** It is the unique name of the wireless network and can be modified. The SSID must be entered.
- **Broadcast (SSID):** Select “**Enable**” to enable the router’ SSID to be scannable by wireless devices. The default is enabled. If you disable it, the wireless devices must know the SSID for communication.
- **Channel:** The currently used channel by the router. Select an effective channel (from 1 to 13\Auto) of the wireless network.
- **WMM Capable:** Enable it to enhance the transfer performance of the wirelessly transferred multimedia data (such as video or online playing).We recommend enabling this option if you are not familiar with WMM.
- **APSD Capable:** It is used for auto power-saved service. The default is disabled.
- **Channel bandwidth:** Select an appropriate channel bandwidth to enhance the wireless performance. Select 20/40M when the network has 11b/g and 11n wireless clients. Select 20M when the network has only non-11n wireless clients. Select 20/40M to promote its throughput when the wireless network is in 11n mode.
- **Extension Channel:** To confirm the network’s frequency range in 11n mode.



NOTE: Some products may have primary SSID and secondary SSID options, as shown below. Primary SSID is necessary, secondary SSID is optional.

☒ Enable wireless function

Wireless Working Mode ☒ Wireless Access Point(AP) ☐ Network Bridge(WDS)

Network Mode 11b/g/n mixed mode ▼

primary SSID Default1

secondary SSID

Broadcast(SSID) ☒ Enable ☐ Disable

AP Isolation ☐ Enable ☒ Disable

Channel 2437MHz (Channel 6) ▼

WMM Capable ☒ Enable ☐ Disable

APSD Capable ☐ Enable ☒ Disable

Channel Bandwidth ☐ 20 ☒ 20/40

Extension Channel 2417MHz (Channel 2) ▼

Ok

Cancel

Network Bridge (WDS) Settings

WDS (Wireless Distribution System) is used to expand wireless coverage area.

☒ Enable wireless function

Wireless Working Mode ☐ Wireless Access Point(AP) ☒ Network Bridge(WDS)

Network Mode 11b/g/n mixed mode

primary SSID Default1

secondary SSID

Broadcast(SSID) ☒ Enable ☐ Disable

AP Isolation ☐ Enable ☒ Disable

Channel 2437MHz (Channel 6)

WMM Capable ☒ Enable ☐ Disable

APSD Capable ☐ Enable ☒ Disable

Channel Bandwidth ☐ 20 ☒ 20/40

Extension Channel 2417MHz (Channel 2)

Working Mode :WDS(Repeater mode)

AP MAC address

AP MAC address

Note: When Bridge mode is selected,the main SSID and channel will auto set as the connected AP.

Open scan

Ok Cancel

- **AP MAC address:** Input the MAC address of another (opposing) wireless router you want to connect.

Example: This example is to bridge two SP916NL routers.

1. If you know the connecting router's MAC address, please enter it into the AP MAC address field and click "Ok".
2. You can also search for the wireless router's signal by scanning.
 - a) Click "Open scan" and click the scanned signal and click the "Ok" button on the dialog box and the corresponding wireless MAC address will be added to the AP MAC address field automatically.

Working Mode :WDS(Repeater mode)

AP MAC address

AP MAC address

Note: When Bridge mode is selected, the main SSID and channel will auto set as the connected AP.

Close scan

Select	SSID	MAC address	Channel	Security	Signal strength
<input type="radio"/>	WiFi Phone	00:3A:99:4C:8B:B2	6	none	81
<input type="radio"/>	Office_916GN	00:11:3B:0D:00:04	6	wep/wpa	78
<input type="radio"/>	HUJIANG	00:13:46:95:6D:65	6	none	80
<input type="radio"/>	rrr	08:10:74:96:18:96	6	wep/wpa	79
<input type="radio"/>	WIFLY	00:17:D1:FE:72:50	8	none	86
<input type="radio"/>	Advantech-Guest	00:3A:99:4C:8B:B3	6	none	86
<input type="radio"/>	3367nl_1	00:11:3B:28:67:61	11	none	69
<input type="radio"/>	3357nl_2	00:11:3B:28:76:89	11	none	70
<input type="radio"/>	Signage	00:3A:99:4C:8B:B7	6	none	85
<input type="radio"/>	Signage	00:3A:99:3A:E0:A7	11	none	88
<input type="radio"/>	3367nl_3	00:11:3B:28:59:E1	1	none	56

b) Click "Ok" after the MAC address is added.

After finishing the above steps, you need to set the other SP916NL router in the same way.



NOTE:

WDS feature requires both routers support this function and the SSID, channel, encryption method and password are the same as those of the connecting router.

5.2 Wireless Security Settings

With the wireless security function, you can prevent others from connecting to your wireless network and using the network resources without your consent. Meanwhile, you can also block illegal users from intercepting or intruding your wireless network.

5.2.1 WPS Settings

WPS (Wi-Fi Protected Setting) makes it quick and easy to establish a secure connection between the wireless clients and the router. The users only need to enter a PIN code or press WPS button on the back panel to configure it without manually selecting an encryption method or set a key.

Wireless Basic Settings **Wireless Security** Access Control Connection Status

Select SSID

SSID -- "Default1"

Security Mode

WPS Settings ☒ Disable ☐ Enable

WPS Mode ☒ PBC ☐ PIN

Note: Wireless Security Settings

802.11n standard only defines Open-None (Disable), WPA personal-AES, and WPA2 personal-AES encryption methods. Other encryption methods are non-standard, and compatibility problems may occur among different manufacturers.

Our company has optimized wireless encryption. Select WPA-AES and you can prevent others from access to your network.

- **WPS settings:** To enable or disable WPS function. The default is "Enable".
- **WPS mode:** Provide two ways: PBC (Push-Button Configuration) and PIN code.
- **PBC:** Select the PBC and click **Ok**, or press and hold the WPS button on the back panel of the device for about one second. The WPS LED indicator will be flashing for 2 minutes, which means the

WPS is enabled. During this time (flashing WPS LED), you can enable the wireless client to implement the WPS/PBC negotiation between them. When the WPS connection is completed, the LED indicator will be continuously lit. To add more clients, repeat the above steps.)

- **PIN:** If this option is enabled, you need to enter a wireless client's PIN code in the field and keep the same code in the WPS client.
- **Reset OOB:** Press this button, the WPS client will be in an idle state, and the WPS indicator will turn off. AP will not respond to the WPS client's connection request and will set the security mode as Open-None (Disable) mode.

 **NOTE:**

The use of WPS function requires the wireless adapter to support this function.

5.2.2 WPA- PSK

WPA guarantees to protect WLAN users' data and only the authorized network users can have access to WLAN.

Select SSID

Default1

SSID -- "Default1"

Security Mode

WPA - PSK

WPA Algorithms

☐ AES
 ☒ TKIP
 ☐ TKIP&AES

Key

12345678

Key Renewal Interval

3600

Second

WPS Settings

☒ Disable
 ☐ Enable

Reset OOB

Note: Wireless Security Settings

802.11n standard only defines Open-None (Disable) ,WPA personal-AES, and WPA2 personal-AES encryption methods. Other encryption methods are non-standard, and compatibility problems may occur among different manufacturers.

Our company has optimized wireless encryption. Select WPA-AES and you can prevent others from access to your network.

Ok

Cancel

- **WPA Algorithms:** Provides TKIP [Temporal Key Integrity Protocol] or AES [Advanced Encryption Standard].
- **Key:** Enter the pass phrase that consists of 8-63 ASCII characters.
- **Key Renewal Interval:** Set the key's renewal period, which tells the device how often it should change the dynamic keys.

5.2.3 WPA2- PSK

WPA2 (Wi-Fi Protected Access version 2) provides higher security than and WPA (Wi-Fi Protected Access).

Select SSID

Default1

SSID -- "Default1"

Security Mode

WPA2 - PSK

WPA Algorithms

☒ AES
 ☐ TKIP
 ☐ TKIP&AES

Key

12345678

Key Renewal Interval

3600

Second

WPS Settings

☒ Disable
 ☐ Enable

Reset QOB

Note: Wireless Security Settings

802.11n standard only defines Open-None (Disable) ,WPA personal-AES, and WPA2 personal-AES encryption methods. Other encryption methods are non-standard, and compatibility problems may occur among different manufacturers.

Our company has optimized wireless encryption. Select WPA-AES and you can prevent others from access to your network.

Ok

Cancel

- **WPA Algorithms:** Provides TKIP [Temporal Key Integrity Protocol] or AES [Advanced Encryption Standard].
- **Key:** Enter the pass phrase that consists of 8-63 ASCII characters.
- **Key Renewal Interval:** Set the key's renewal period, which tells the device how often it should change the dynamic keys.

5.3 Wireless Access Control

Wireless access control is actually based on the MAC address to permit or forbid specific clients to access the wireless network.

Advanced settings Wireless settings DHCP Server Virtual server Security settings Routing settings System tools

Wireless Basic Settings Wireless Security Access Control Connection Status

Select SSID Default1

Configure wireless interface MAC address filter.

MAC address filter Disable

Ok Cancel

- **MAC address filter:** “Permit” indicates to allow the clients in the list to access the wireless network, “Forbid” indicates to prevent the clients in the list from accessing the wireless network.
- **Configure MAC address:** Input the MAC addresses of the wireless clients to implement the filter policy. Click “Add” to finish the MAC add operation.
- **MAC Address list:** Show the added MAC addresses. You can add or delete them.

5.4 Connection Status

This screen shows wireless client's connection status, including MAC address, Channel bandwidth.

Advanced settings Wireless settings DHCP Server Virtual server Security settings Routing settings System tools

Wireless Basic Settings Wireless Security Access Control Connection Status

Select SSID Default1

This page displays the connection information of the wireless router.

The currently connected hosts list: Refresh

NO.	MAC address	Bandwidth
0	00:C0:CA:32:54:52	40M

- **MAC address:** Shows the MAC addresses of the hosts connected to the Router.
- **Bandwidth:** Shows the channel bandwidth of the current connected hosts (wireless clients).

6 DHCP Server

6.1 DHCP Server

DHCP (Dynamic Host Control Protocol) is used to assign an IP address to the computers on the LAN/private network. When you enable the DHCP Server, the DHCP Server will allocate automatically an unused IP address from the IP address pool to the requesting computer in premise of activating "Obtain an IP Address Automatically". So specifying the start and end address of the IP Address pool is needed.

Advanced settings Wireless settings **DHCP Server** Virtual server Security settings Routing settings System tools

DHCP Server DHCP Client List

DHCP Server ☒ Enable

IP pool start address 192.168.1.100

IP pool end address 192.168.1.200

Lease Time One day

Ok Cancel

- **DHCP server:** Check the **Enable** box to enable DHCP server.
- **IP pool start/end address:** Enter the range of IP addresses for DHCP server distribution.
- **Lease time:** It indicates the valid time of the dynamic IP address which is distributed to the DHCP client's host computer by DHCP server. During this time, the server will not distribute the IP address to any other host computer.

6.2 DHCP Client List

DHCP client list displays user computer' IP address, MAC address, host name and other information which are assigned by the DHCP server. You can manually enter the IP and MAC address and convert them to static assignment.

7 Virtual Server

7.1 Port Range Forwarding

Advanced settings	Wireless settings	DHCP Server	Virtual server	Security settings	Routing settings	System tools
-------------------	-------------------	-------------	----------------	-------------------	------------------	--------------

Port Range Forwarding DMZ Host UPNP Settings

Port range forwarding sets up public services on your network, such as web servers, ftp servers, e-mail servers, and other specialized Internet applications. When you have set up one service, then the communication requests from the Internet to your router's WAN port will be converted to the specified LAN IP address.

NO.	Start port-End port	LAN IP	Protocol	Enable	Delete
1.	<input type="text"/> - <input type="text"/>	192.168.1. <input type="text"/>	TCP	<input type="checkbox"/>	<input type="checkbox"/>
2.	<input type="text"/> - <input type="text"/>	192.168.1. <input type="text"/>	TCP	<input type="checkbox"/>	<input type="checkbox"/>
3.	<input type="text"/> - <input type="text"/>	192.168.1. <input type="text"/>	TCP	<input type="checkbox"/>	<input type="checkbox"/>
4.	<input type="text"/> - <input type="text"/>	192.168.1. <input type="text"/>	TCP	<input type="checkbox"/>	<input type="checkbox"/>
5.	<input type="text"/> - <input type="text"/>	192.168.1. <input type="text"/>	TCP	<input type="checkbox"/>	<input type="checkbox"/>
6.	<input type="text"/> - <input type="text"/>	192.168.1. <input type="text"/>	TCP	<input type="checkbox"/>	<input type="checkbox"/>
7.	<input type="text"/> - <input type="text"/>	192.168.1. <input type="text"/>	TCP	<input type="checkbox"/>	<input type="checkbox"/>
8.	<input type="text"/> - <input type="text"/>	192.168.1. <input type="text"/>	TCP	<input type="checkbox"/>	<input type="checkbox"/>
9.	<input type="text"/> - <input type="text"/>	192.168.1. <input type="text"/>	TCP	<input type="checkbox"/>	<input type="checkbox"/>
10.	<input type="text"/> - <input type="text"/>	192.168.1. <input type="text"/>	TCP	<input type="checkbox"/>	<input type="checkbox"/>

Well-known service ports:

- **Start/End port:** Enter the start/end port number which ranges the External ports used to set the server or Internet applications.
- **LAN IP:** Enter the IP address of the PC which you want to set as the server.
- **Protocol:** Select the protocol (TCP/UDP/Both) for the application. If you are not clear about the protocol you are using, you can select "Both".
- **Enable:** Click the **Enable** checkbox to bring the set rule into effect.
- **Delete:** Clear all settings of this item.
- **Well-known service port:** The well-known protocol ports are listed in the drop-down list. Select one and select a sequence number in

the ID drop-down list and then click "Add", this port will be added automatically to the ID list. For other well known service ports that are not listed, you can manually add them to the list.

➤ **Add to:** Add the selected well-known port to the policy ID.

For Example: You want to share some large files with your friends outside of your local area network, however, they are too big, and it's not convenient to transfer them. Then, you can build a FTP server on your computer and set the router's port range forwarding to enable your friends to access to these files on your computer. Suppose that your FTP server or your computer's static IP address is 192.168.1.10, and you wish your friends can access the server through the default port 21 and adopts TCP protocol.

Please follow the steps below to configure.

1. Enter 21 in both start port and end port fields, or you can also select FTP from the well-known service port and its port 21 will be added to the corresponding field automatically.
2. Enter 192.168.1.10 in the LAN IP column, and then select "Both" as the protocol and select "Enable".
3. As the picture shown below.

NO.	Start port-End port	LAN IP	Protocol	Enable	Delete
1.	21-21	192.168.1.10	TCP	<input checked="" type="checkbox"/>	<input type="checkbox"/>
2.		192.168.1.	TCP	<input type="checkbox"/>	<input type="checkbox"/>
3.		192.168.1.	TCP	<input type="checkbox"/>	<input type="checkbox"/>
4.		192.168.1.	TCP	<input type="checkbox"/>	<input type="checkbox"/>
5.		192.168.1.	TCP	<input type="checkbox"/>	<input type="checkbox"/>
6.		192.168.1.	TCP	<input type="checkbox"/>	<input type="checkbox"/>
7.		192.168.1.	TCP	<input type="checkbox"/>	<input type="checkbox"/>
8.		192.168.1.	TCP	<input type="checkbox"/>	<input type="checkbox"/>
9.		192.168.1.	TCP	<input type="checkbox"/>	<input type="checkbox"/>
10.		192.168.1.	TCP	<input type="checkbox"/>	<input type="checkbox"/>

Well-known service ports: FTP(21) Add to ID 1

Ok

Cancel

4. Click the "Ok" button to save the settings.

And now, when your friends want to visit the FTP server, they only need to enter [ftp://xxx.xxx.xxx.xxx:21](#) in the address field. Here, xxx.xxx.xxx.xxx means the router's WAN IP address. For example, when your router's WAN IP address is 210.242.6.221; your friends need to enter [ftp://210.242.6.221:21](#) in the address field.



NOTE:

If you set the service port of the virtual server as 80, you must set the Web management port on Remote Web Management screen to be any value except 80 such as 8080. Otherwise, there will be a conflict to disable the virtual server.

7.2 DMZ Settings

The DMZ Settings screen allows one local computer to be exposed to the Internet for use of a special-purpose service such as Internet gaming or videoconferencing. DMZ hosting forwards all the ports at the same time to one PC.

Port Range Forwarding [DMZ Host](#) [UPNP Settings](#)

NOTE: When the DMZ host is enabled, the firewall settings of the DMZ host will not function.

DMZ host IP address

☐ Enable

Ok

Cancel

- **DMZ Host IP Address:** The IP address of the LAN computer you want to set as DMZ host.
- **Enable:** Check to enable the DMZ host.

For example:

Set the computer at the IP address of 192.168.1.10 as DMZ host to connect another host on the Internet for intercommunication.



NOTE:

When the DMZ host is enabled, the firewall settings of the DMZ host will not function.

7.3 UPNP Settings

UPnP (Universal Plug and Play). With the UPnP function, the internal host can request the router to process some special port switching so as to enable the external host to visit the resources of the internal host.

Port Range Forwarding [DMZ Host](#) [UPNP Settings](#)

Enable UPnP ☒

Ok

Cancel

➤ **Enable UPnP:** Click the checkbox to enable the UPnP.



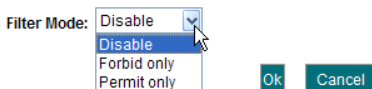
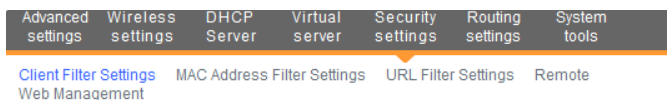
NOTE:

This function goes into effect under Windows XP or Windows ME (**NOTE:** the system should integrate or have installed the Directx 9.0) or this function would go into effect if you have installed software that supports UPnP.

8 Security Settings

8.1 Client Filter Settings

You can enable client filter to control LAN computers' access to some ports of the Internet.



- **Filter Mode:** You can select either “Permit only” or “Forbid only”.
- **Access Policy:** Select one number from the drop-down list.
- **Remark:** A simple description of the configured file. You can also leave it blank.
- **Start/End IP:** Enter the start/end IP address.
- **Port:** Enter the controlled TCP/UDP protocol port. You can specify a port or port range.
- **Type:** Select one protocol (TCP/UDP/Both) from the drop-down list.
- **Time:** Select the time range of client filter.
- **Date:** Select the day(s) to run the access policy.
- **Enable:** To enable/disable the access policy (forbid/permit the packets matched with the access policy to pass through the router).

Example1 Forbid LAN computers at the IP addresses of 192.168.1.100--192.168.1.120 to access the Internet.

Filter Mode: Forbid only

Access Policy: (1)

Remark:

Start IP: 192.168.1.100

End IP: 192.168.1.120

Port: 1 ~ 65535

Type: Both

Time: 0 : 0 ~ 0 : 0

Date: Sunday ~ Saturday

Enable: ☒ Clear this item: Clear

Ok Cancel

Example 2 Permit LAN computer with the IP address of 192.168.1.145 to access websites during 8:00 to 18:00 from Sunday to Saturday.

Filter Mode: Forbid only

Access Policy: (1)

Remark:

Start IP: 192.168.1.145

End IP: 192.168.1.145

Port: 80 ~ 80

Type: TCP

Time: 8 : 0 ~ 18 : 0

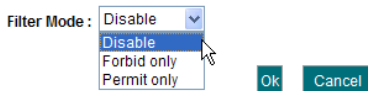
Date: Sunday ~ Saturday

Enable: ☒ Clear this item: Clear

Ok Cancel

8.2 MAC Address Filter

You can limit the computer's access to Internet by MAC Address Filter.



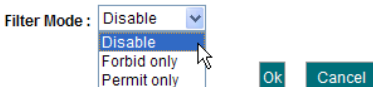
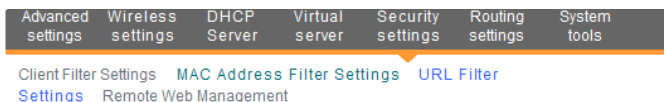
- **Filter mode:** You can select either “Permit only” or “Forbid only”.
- **Access Policy:** Select one number from the drop-down list.
- **Remark:** A simple description of the configured file. You can also leave it blank.
- **MAC Address:** Enter the MAC address you want to run the access policy.
- **Time:** Select the time range of MAC address filter.
- **Date:** Select the day(s) to run the access policy.
- **Enable:** To enable/disable the access policy (forbid/permit the packets matched with the access policy to pass through the router).

Example 1 Forbid the computer with the MAC address of 00:E0:4C:69:A3:23 to access Internet during 8:00 to 18:00 from Monday to Friday.

Example 2 Permit the computer with the MAC address of 00:E4:A5:44:35:69 to access Internet from Monday to Friday.

8.3 URL Filter Settings

You can use URL filtering to forbid their access to certain websites at a specified time.



- **Filter Mode:** You can select either “Permit only” or “Forbid only”.
- **Access Policy:** Select one number from the drop-down list.
- **Remark:** A simple description of the configured file. You can also leave it blank.
- **Start/End IP:** Enter the start/end IP address.
- **URL character string:** Specify the text strings or keywords needed to be filtered.
- **Time:** Select the time range of URL filter.
- **Date:** Select the day(s) to run the access policy.
- **Enable:** To enable/disable the access policy (forbid /permit the packets matched with the access policy to pass through the router).

Example1 Forbid all computers on LAN to access baidu.com during 8:00 to 18:00 from Monday to Friday.

Example2 Permit LAN computers with the IP addresses of 192.168.1.100-192.168.1.115 to access yahoo.com.

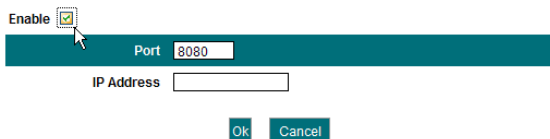
NOTE:

Enter only one domain name for each access policy for one access policy can only filter one domain name. So, if you want to filter multiple domain names, you need to set multiple access policies

8.4 Remote Web Management

This section instructs how to allow the network administrator to manage the Router remotely. If you want to access the Router from outside of the local network, please click the checkbox after "Enable".

[Client Filter Settings](#) [MAC Address Filter Settings](#) [URL Filter Settings](#) [Remote Web Management](#)



- **Enable:** Check to enable remote web management.
- **Port:** The management port open to outside access. The default value is 80.
- **IP Address:** Specify the range of the IP addresses of the computers on the Internet for remote management.

 **NOTE:**

1. If you want to log in the device's Web-based Utility via port 8080, you need to use the format of WAN IP address: port (for example `http://220.135.211.56:8080`) to implement remote login.
2. If your WAN IP address starts and ends with 0.0.0.0, it means all hosts on the Internet can implement remote Web management. If you change the Internet IP address as 218.88.93.33-218.88.93.35, then only the computers at the IP addresses of 218.88.93.33, 218.88.93.34 and 218.88.93.35 can access the Router to implement remote web management.

For example:

If you want to configure the computer at the IP address of 218.88.93.33 to access the router's web-based utility via port 8080, please set the parameters as above.

9 Routing Settings

9.1 Routing Table

This page shows the router's core routing table.

Advanced settings

Wireless settings

DHCP Server

Virtual server

Security settings

Routing settings

System tools

Routing Table

Static Routing

Destination IP	Subnet mask	Gateway	Hops	Interface
192.168.1.0	255.255.255.0	192.168.1.0	0	br0

Refresh

The main duty for a router is to look for a best path for every data packet, and transfer this data packet to a destination station. In order to fulfill this function, many transferring paths, i.e. routing table, are saved in the router, for choosing when needed.

9.2 Static Routing

This screen is used to set the router's static routing.

A static route is a pre-determined pathway that network information must travel to reach a specific host or network.

Advanced settings	Wireless settings	DHCP Server	Virtual server	Security settings	Routing settings	System tools
Routing Table <u>Static Routing</u>						
Destination network IP address		Subnet mask	Gateway	Operate		
<input type="text"/>		<input type="text"/>	<input type="text"/>	<input type="button" value="add"/>		
<input type="button" value="Ok"/> <input type="button" value="Cancel"/>						

- **Destination network IP address:** The destination host or IP segment you visit.
- **Subnet mask:** Enter the subnet mask, generally it is 255.255.255.0

➤ **Gateway:** The entry IP address of the next router.

 **NOTE:**

1. The gateway must be at the same net segment with the router's LAN IP.
2. If the destination IP address is a host address, then the subnet mask must be 255.255.255.255.
3. If the destination IP address is an IP segment, then it must match with the subnet mask. For example, if the destination IP is 10.0.0.0 then the subnet mask must be 255.0.0.0

10 System Tools

10.1 Time Settings

This section is to configure the router's system time. You can set it manually or obtain the GMT time from the Internet.

Advanced settings	Wireless settings	DHCP Server	Virtual server	Security settings	Routing settings	System tools
-------------------	-------------------	-------------	----------------	-------------------	------------------	--------------

Time Settings DDNS Backup/Restore Restore to Factory
Default Upgrade Reboot the router Change Password Syslog

Time zone: (GMT-04:00)Atlantic Time (Canada) ▼

(Note : GMT time can only be got after accessing to the Internet.)

Customized time : ☐

2011 Year 10 Month 24 Date 10 Hour 59 Minute 54 Second

Ok Cancel

➤ **Time zone:** Select the time zone where you are operating the Router from the drop-down list.

➤ **Customized time:** Enter the time you wish to configure.

NOTE:

When the Router is powered off, the time settings will be lost. The router will obtain the GMT time automatically when you next time access the Internet. Only when you connect to the Internet and obtain the GMT time or set the time on this screen, can the time settings in other functions (e.g. security settings) take effect.

10.2 DDNS

The DDNS (Dynamic Domain Name System) is supported in this Router. It is used to assign a fixed host and domain name to a dynamic Internet IP address. Every time you access the Internet, the dynamic domain name software installed on your host will tell the ISP'S host server its dynamic IP address by sending messages. And the server software is responsible for

providing DNS service and implementing dynamic domain name resolution.

Time Settings **DDNS** Backup/Restore Restore to Factory
Default Upgrade Reboot the router Change Password Syslog

DDNS Service ☒ Enable ☐ Disable

Service Provider 88ip.cn

Username

Password

Domain Name

Ok Cancel

➤ **Main features:**

1. Mostly, your ISP provides a dynamic IP address and the DDNS is used to capture the changeable IP address and match to the fixed domain. Then users can have access to the Internet to communicate with others outside the network.

2. DDNS can help you to establish a virtual host in your home or company.

- **DDNS:** Click the radio button to enable or disable the DDNS service.
- **Service provider:** Select one from the drop-down list and click “Sign up” for registration.
- **Username:** Enter the username that you use to register from the DDNS provider
- **Password:** Enter the password that you use to register from the DDNS provider
- **Domain name:** Enter the effective registered domain name

For example:

Establish a Web server in the local host 192.168.1.10 and register in 3322.org as follows:

Username	Micronet
Password	123456
Domain Name	Micronet.3322.org

After mapping the port in the virtual server, and setting account information in DDNS server, you can then access the web page by entering <http://micronet.3322.org> in the address field.

10.3 Backup/Restore

On this screen, you can back up the router's current settings or restore previous settings.

Time Settings DDNS **Backup/Restore** Restore to Factory
Default Upgrade Reboot router Change Password Syslog

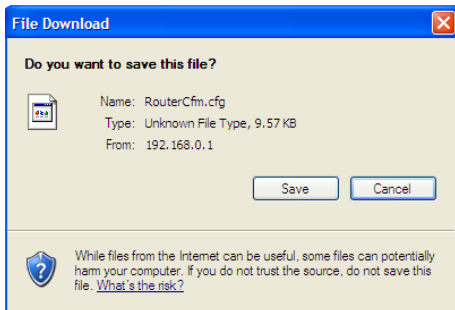
You can backup/restore the router's current configuration.

Select the file directory to save the configured parameters: **Backup**

Select the configured file you want to import:

➤ **Backup Setting:**

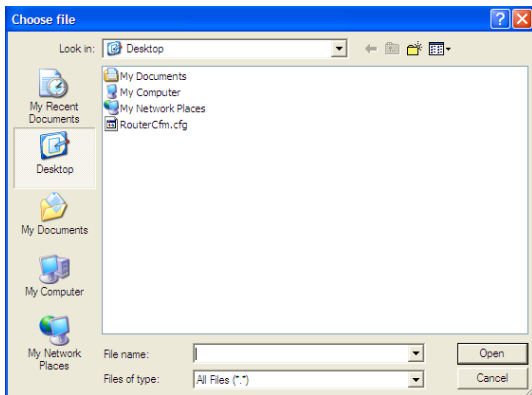
Click the **Backup** button to back up the Router's settings and select a path to save them.



Click the **"Save"** button to save the configuration files.

➤ **Restore Setting:**

Click the **"Browse"** button to select the backup files.



Click the “**Restore**” button to restore previous settings.

You can backup/restore the router's current configuration.

Select the file directory to save the configured parameters: **Backup**

Select the configured file you want to import:

C:\Documents and Settings\... **Restore**

10.4 Restore to Factory Default

This screen allows you to restore all settings to the factory default values.

Click this button to restore the router's all settings to factory default.

Restore to factory default

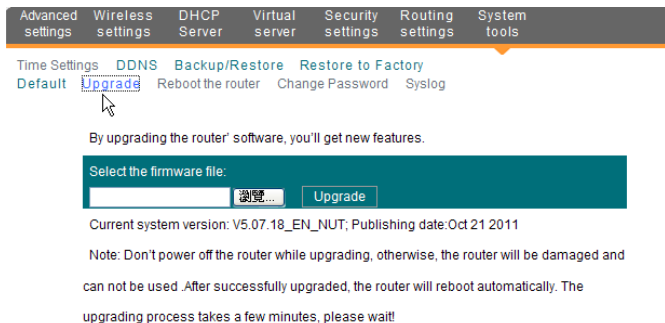
- **Restore:** Click this button to restore to default settings.
- **Factory default settings:**
 - Password:** 1234(the default password displays as null)
 - IP address:** 192.168.1.1
 - Subnet mask:** 255.255.255.0

NOTE:

After restoring to default settings, please restart the router to make the default settings effective.

10.5 Upgrade

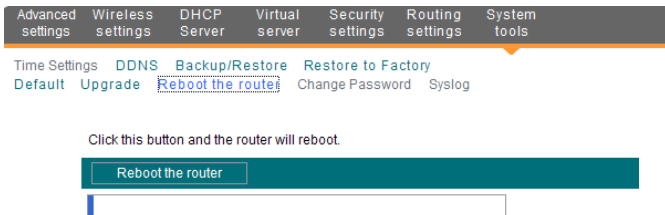
By upgrading the router's software, you'll get better software version and appreciated routing function. Before upgrading, download the Router's software upgrade file from our website, www.micronet.info.



- **Browse:** Click this button to select the upgrade file.
- **Upgrade:** Click this button to start the upgrading process. After the upgrade is completed, the router will reboot automatically.

10.6 Reboot the Router

Reboot the router to make the configuration effective. The router will cut its WAN connection automatically after rebooting.



- **Reboot the router:** Click this button to reboot the router.

10.7 Password Change

This section is to set a new password to better secure your router and network.

The screenshot shows the router's configuration page with a top navigation bar containing: Advanced settings, Wireless settings, DHCP Server, Virtual server, Security settings, Routing settings, and System tools. Below this is a secondary navigation bar with links: Time Settings, DDNS, Backup/Restore, Restore to Factory, Default, Upgrade, Reboot the router, Change Password (highlighted with a dotted border), and Syslog. The main content area has the heading 'On this page ,you can change the administrator's password.' followed by a note: 'Note: Password can only consist of letters and numbers.' There are three input fields labeled 'Old password', 'New password', and 'Confirm new password'. At the bottom are 'Ok' and 'Cancel' buttons.

- **Old password:** Enter the old password.
- **New password:** Enter a new password.
- **Confirm new password:** Re-enter to confirm the new password.

NOTE:

The default password displays as null, users can log on the web-based utility without any authentication. To secure the router and your network, it is highly recommended that you change the initial password.

10.8 Syslog

The section is to view the system log. You can view various conditions appearing after system start, and also check whether there's an attack on the network. The log can record at most 150 entries.


The 1 page log contents

1	2011-04-01 00:48:18	pppoe0	ppp0 receives PADO
2	2011-04-01 00:48:35	pppoe0	ppp0 send PADI
3	2011-04-01 00:48:35	pppoe0	ppp0 receives PADO
4	2011-04-01 00:49:08	pppoe0	ppp0 send PADI
5	2011-04-01 00:49:08	pppoe0	ppp0 receives PADO
6	2011-04-01 00:49:08	pppoe0	Send PADR, Enter PPPOE_SREQ
7	2011-04-01 00:49:08	pppoe0	ppp0 send PADR
8	2011-04-01 00:49:08	pppoe0	ppp0 receive PADS
9	2011-04-01 00:49:08	pppoe0	Enter PPPOE_CONNECTED, session_id = 922

- **Refresh:** Click this button to update the log.
- **Clear:** Click this button to clear the current shown log.

10.9 Log out

After all settings are finished, please click "Log out" to exit securely and completely.



Model No. SP916NL
150M Wireless Broadband Router

[Initial page settings](#) | [Log out](#)

[Advanced settings](#)
[Wireless settings](#)
[DHCP Server](#)
[Virtual server](#)
[Security settings](#)
[Routing settings](#)
[System tools](#)

[Time Settings](#)
[DDNS](#)
[Backup/Restore](#)
[Restore to Factory Default](#)
[Upgrade](#)
[Reboot the router](#)
[Change Password](#)
[System log](#)

The 1 page log contents

1	2011-04-01 00:48:18	pppoe0	ppp0 receives PADO
2	2011-04-01 00:48:35	pppoe0	ppp0 send PADI

Help information
 View history records
 Note : The logs will clear automatically when cover 15 pages(namely 150 records).

Appendix 1 Glossary

Channel:

An instance of medium use for the purpose of passing protocol data units (PDUs) that may be used simultaneously, in the same volume of space, with other instances of medium use (on other channels) by other instances of the same physical layer (PHY), with an acceptably low frame error ratio (FER) due to mutual interference.

SSID:

SSID (Service Set Identifier) is the network name shared by all devices in a wireless network. Your network's SSID should be unique to your network and identical for all devices within the network. It is case-sensitive and must not exceed 20 characters (use any of the characters on the keyboard). Make sure this setting is the same for all devices in your wireless network.

WPA/WPA2 Encryption:

A security protocol for wireless networks that builds on the basic foundations of WEP. It secures wireless data transmission by using a key similar to WEP, but the added strength of WPA is that the key changes dynamically. The changing key makes it much more difficult for a hacker to learn the key and gain access to the network. WPA2 is the second generation of WPA security and provides a stronger encryption mechanism through Advanced Encryption Standard (AES), which is a requirement for some government users.

802.1x authentication

Static WEP key is difficult to manage for when you change the key, you will have to inform all others, and if the key is disclosed in one of the places, the key can no longer provide security. Besides, there's severe security loophole about static WEP encryption. The WEP key can be decrypted after one person receives a specific amount of data via wireless intercepting. 802.1x is initially used for wired Ethernet authentication access to prevent illegal users from accessing the network. Later, it is found that 802.1x can better solve the wireless network security problem. EAP-TLS of the 802.1x successfully achieves the two-way authentication between users and networks, i.e. can prevent illegal users from accessing the network and can also prevent users from accessing the illegal AP. 802.1x utilizes dynamic WEP encryption to protect the WEP key from

being decrypted. To solve the publishing problem for digital certification, people make some changes to TLS authentication and TTLS and EAP come into exist, which enable you to access the network by using the traditional way of authentication: username and password.

Appendix 2 Product Features

- Supports IEEE 802.11n, IEEE 802.11g, IEEE 802.11b, IEEE 802.3 and IEEE 802.3u standards.
- High gain omni-directional antenna, with strong signals and long transmission distance.
- Wireless transmission rate up to 150Mbps or 300 Mbps
- Provides one 10/100Mbps auto-negotiation Ethernet WAN port to connect to the Wide Area Network
- Provides four 10/100Mbps auto-negotiation Ethernet LAN ports to connect to the Local Area Network
- Supports Auto MDI/MDIX
- Supports xDSL/Cable MODEM, static and dynamic IP in community broadband networking
- Includes router, wireless access point, four-port switch and firewall all in one
- Supports WPA-PSK, WPA2-PSK, and WPA-PSK&WPA2-PSK mixed security modes
- Supports WPS button
- Supports hidden SSID function and MAC address-based access control
- Supports WMM to make your audio and video smoother
- Supports SNTP
- Supports UPnP and DDNS
- Supports WDS to extend wireless network
- Supports wireless WAN and allows access to ISP's wireless hot-spots to share Internet access with multiple computers (this function applies only to some of the products).
- Supports virtual server, DMZ host
- Provides syslog to record the running status of the router

Appendix 3 FAQ

This section provides some solutions to the problems which may occur during the router's installation or usage. The instructions below may help you deal with the problems. If your problem is not in the list, please log into our website www.micronet.info or send an E-mail to www.micronet.info, and we will reply to you at the earliest time.

1. Can not log in to the Web-based Utility of the router after you enter the IP address in the address field?

Step 1: Check if the router is working correctly, after the device is powered on for a few seconds, the SYS indicator on the front panel should light up. If it is not, please contact us.

Step 2: Check the network cables are connected correctly and the corresponding LED indicator lights up. Sometimes, the indicator lights up, but it does not mean it is functioning.

Step 3: Run "Ping" command and check if it can ping the Router's LAN IP address 192.168.1.1 (open "Command Prompt" and type "Ping 192.168.1.1" and then enter). If it is OK, please make sure your browser does not access the Internet by proxy server. If the ping fails, you can press the "RESET" button for 7 seconds to restore to default settings. And then repeat the ping operation. If it still does not work, please contact us.

2. Forgot the login password and cannot enter the Web-based Utility.

What can I do?

Press the "RESET" button for 7 seconds to restore the Router to default settings.

3. The computer connected with the Router shows IP address conflict. What can I do?

Check if there are other DHCP servers in the LAN and if there are then disable them. The default IP address of the router is 192.168.1.1 please make sure the address is not being used by any other device. If there are two computers with the same IP address, please change one of them.

4. I cannot use E-mail and access the Internet. What can I do?

Sometimes happens with ADSL connection and Dynamic IP users. You may need to modify the default MTU value (1492). Please open the "WAN Setting" and modify the MTU value with the recommended value as 1450 or 1400.

5. How to share my computer's resource with other users in Internet?

If you want Internet users to access the internal server via the router such as: e-mail server, Web, FTP. You can configure the "Virtual Server".

Step 1: create your internal server, make sure the LAN users can access these servers and know related service port. For example, Web server's port is 80; FTP is 21; SMTP is 25 and POP3 is 110.

Step 2: In the router's web click "Virtual Server" and select "Port Range Forwarding".

Step 3: Input the service port provided by the router (i.e. the external port) for mapping the internal and external network, for example, 80-80.

Step 4: input the internal Web service port, for example, 80-80.

Step 5: Input the internal server's IP address. For example, if your Web server's IP address is 192.168.1.10, please input it.

Step 6: select the communication protocol used by your internal host: TCP, UDP, Both.

Step 7: click "Ok" to activate the settings.

The following table lists some well-known applications and their respective

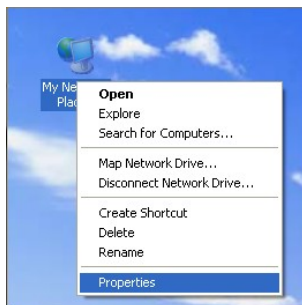
service ports:

Server	Protocol	Service Port
WEB Server	TCP	80
FTP Server	TCP	21
Telnet	TCP	23
NetMeeting	TCP	1503-1720
MSN Messenger	TCP/UDP	File Send:6891-6900(TCP) Voice:1863-6901(TCP) Voice:1863-5190(UDP)
PPTP VPN	TCP	1723
Iphone5.0	TCP	22555
SMTP	TCP	25
POP3	TCP	110

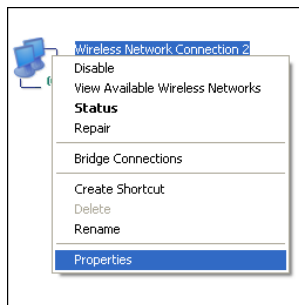
Appendix 4 Clear Wireless Configuration

Clear Wireless configuration file under windows XP

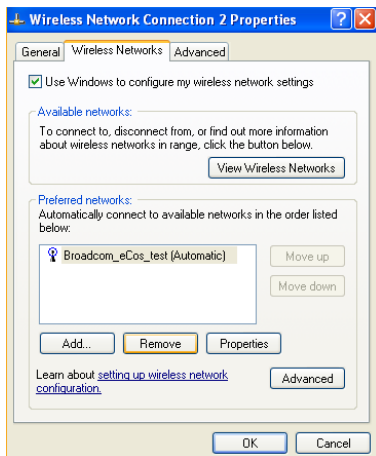
1. Right click **"My Network Places"** on your computer desktop and select **"Properties"**.



2. Right click "Wireless Network Connections" and select "Properties".

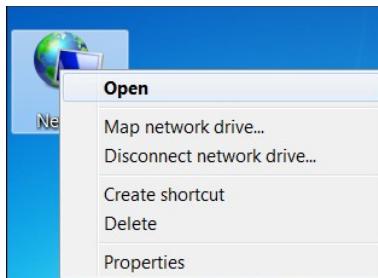


3. Click "Wireless Network Configuration" and clear the corresponding wireless configuration file as shown below.

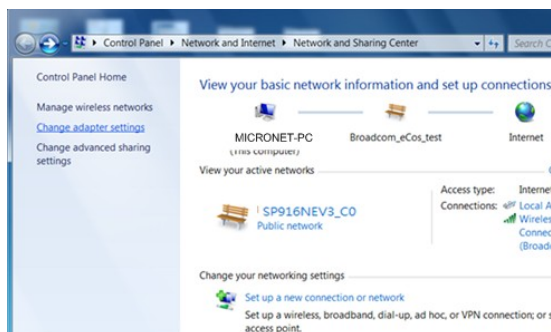


Clear Wireless configuration file under windows 7

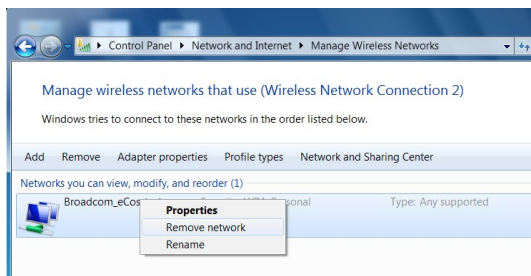
1. Right click "Network" and click "Properties".



2. Click "Manage wireless networks" on the left side of the window.



3. Delete the corresponding configured file in the "Manage wireless networks".



Appendix 5 Regulatory Information

EU Declaration or Declaration of Conformity

Hereby, Micronet Communication Inc., declares that this Wireless Broad-band Router is in compliance with the essential requirements and other relevant provisions of Directive 1999/5/EC.

FCC Statement

This equipment has been tested and found to comply with the limits for a Class B digital device, pursuant to part 15 of the FCC rules. These limits are designed to provide reasonable protection against harmful interference in a residential installation. This equipment generates uses and can radiate radio frequency energy and, if not installed and used in accordance with the instructions, may cause harmful interference to radio communications. However, there is no guarantee that interference will not occur in a particular installation. If this equipment does cause harmful interference to radio or television reception, which can be determined by turning the equipment off and on, the user is encouraged to try to correct the interference by one or more of the following measures:

- Reorient or relocate the receiving antenna.
- Increase the separation between the equipment and receiver.
- Connect the equipment into an outlet on a circuit different from that to which the receiver is connected.
- Consult the dealer or an experienced radio/TV technician for help.

To assure continued compliance, any changes or modifications not expressly approved by the party responsible for compliance could void the user's authority to operate this equipment. (Example- use only shielded interface cables when connecting to computer or peripheral devices).

"The antenna(s) used for this transmitter must not be co-located or operating in conjunction with any other antenna or transmitter."

FCC Radiation Exposure Statement

This equipment complies with FCC radiation exposure limits set forth for an uncontrolled environment. This equipment should be installed and operated with the minimum distance of 20 cm. Operation is subject to the following two conditions:

- 1) This device may not cause interference, and
- 2) This device must accept any interference, including interference that may cause undesired operation of the device.

Caution!

The manufacturer is not responsible for any radio or TV interference caused by unauthorized modifications to this equipment. Such modifications could void the user authority to operate the equipment.